

easy
LIVING

Exclusive to
Carlisle Homes
FULL TURNKEY
Package

EXCLUSIVE PACKAGE

fixed price

\$575,100*

first home owners \$565,100^

Images for illustrative purposes only & may depict upgrade options available at additional charges such as lighting, window furnishings, timber look garage door & timber windows. Pricing also excludes features not supplied by Carlisle, inc. fencing, landscaping, letterbox, docking & driveway. Facade details inc entry door, window sizes & placements may vary between house types & sizes. Refer to working drawings for specific locations and sizes.

**why
rent?**



buy from
\$360 PER WEEK*
first home owners

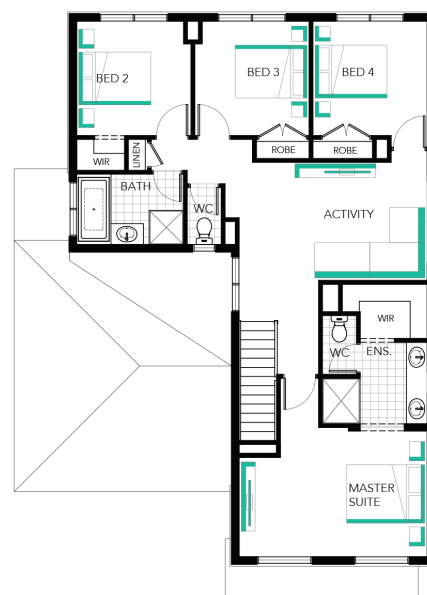
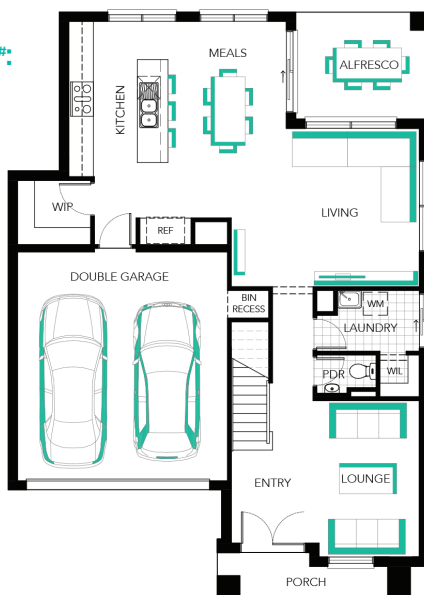
Berkley 27



Lot 1770 (275m²) Delaray, CLYDE NORTH

EasyLiving 'Move in with More' Inclusions**:

- ✓ FIXED PRICE SITE COSTS AND CONNECTIONS
- ✓ DEVELOPER AND COUNCIL REQUIREMENTS
- ✓ FLOORING TO ENTIRE HOME
- ✓ EVAPORATIVE COOLING
- ✓ 20MM CAESARSTONE BENCHTOPS TO KITCHEN
- ✓ 900MM WIDE STAINLESS STEEL UPRIGHT COOKER AND RANGEHOOD
- ✓ DISHWASHER
- ✓ OVERHEAD CUPBOARDS TO KITCHEN
- ✓ DRIVEWAY
- ✓ LANDSCAPING
- ✓ FENCING
- ✓ CLOTHESLINE
- ✓ LETTERBOX
- ✓ FLYSCREENS AND KEYED WINDOW LOCKS
- ✓ BLOCKOUT ROLLER BLINDS
- ✓ REMOTE CONTROL GARAGE DOOR
- ✓ QUALITY FIXTURES AND FITTINGS THROUGHOUT



FOR ENQUIRIES CONTACT:

David Byrden m: 0402 420 636 | w: easylivingbycarlisle.com.au
Or visit: Eliston, 24 -30 Waterman Drive, CLYDE VIC 3978

DELARAY
CLYDE NORTH

*Price current as of 03/10/2019. Applies to EasyLiving Estate series only. Confirm land prices and availability prior to purchase. Subject to developer and council approval. Price does not include any stamp duty, government, legal or bank charges. Alterations may incur additional charges. Carlisle reserves the right to withdraw or amend pricing, inclusions and promo without notice. ^Total package price minus \$10K FHOG or \$20K FHOG for regional estates (subject to SRO eligibility). #Repayment calculated on total package price, less 20% deposit inclusive of the \$10K First Home Owner's Grant or \$20K First Home Owner's Grant for regional estates (subject to SRO eligibility), less fees, not inclusive of lender's mortgage insurance, with a variable interest rate of 4.15% p.a., comparison rate of 4.17% p.a., and 5 years of Interest-Only repayments. For further details see your Sales Consultant and visit carlislehomes.com.au/disclaimer/ for full details. ©2019 Carlisle Homes Pty Ltd. Registered Building Practitioner CDB-U50143.