

New

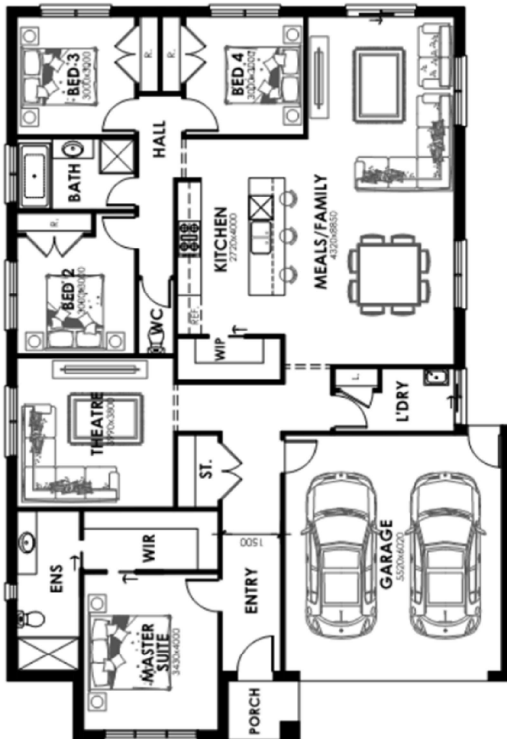
# House & land

Studio



\$585,750 fhb\*

Lot 1777 DELARAY ESTATE  
CLYDE North  
SATSUMA 23



## QUALITY INCLUSIONS

- SITE COSTS ALLOWANCE & ESTATE REQUIREMENTS
- PART RENDER TO FAÇADE (FAÇADE DEPENDENT)
- EAVES TO FRONT FAÇADE
- EXTRA RENDER TO FAÇADE
- SOFT CLOSE DRAWERS AND DOOR TO KITCHEN AND BATHROOMS
- PULL OUT BIN TO KITCHEN CUPBOARD
- BAL 12.5
- DUCTED HEATING WITH TIMER
- 20mm STONE TO KITCHEN BENCHES AND VANITIES
- STAINLESS STEEL DISHWASHER
- REMOTE CONTROL TO GARAGE DOOR
- FLYSCREENS TO ALL WINDOWS
- WINDOW LOCKS TO ALL OPENABLE WINDOWS
- JOINERY TO LAUNDRY WITH DROP IN TROUGH
- MIXER TAPS THROUGHOUT
- 3 TV POINTS
- 1 PHONE POINT
- LED DOWNLIGHT TO PORCH
- 10 YEAR STRUCTURAL GUARANTEE
- PLUS SO MUCH MORE

Enquiries call: Jack Yang 0450 339 227

Office: 2/248 Clyde Road, Berwick. 3806      Show Home: 151 Athletic Circuit, Clyde

Disclaimer ... \* Price does have the first home buyers grant taken off the listed price & does not include any stamp duty, government levies, legal or bank charges. New House & Land Studio reserves the right to amend pricing & inclusions without notice.

Note the images used on this brochure are indicative only. please check with our sales team for accurate working drawing details.