

## HOUSE & LAND PACKAGE

- Stylish, practical floorplans
- Amazing on-trend inclusions beyond the essentials



### Bayview 372

6 3 2 14.0m



Lot: 1725 Sutil Drive, Clyde North

Estate: Delaray

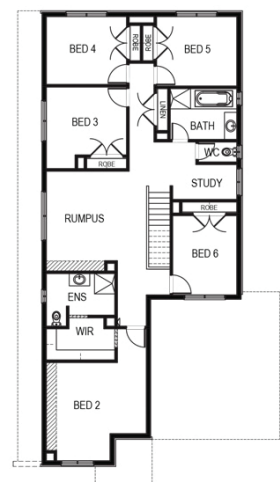
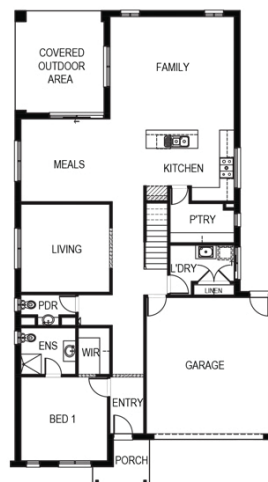
Block size: 448m<sup>2</sup>

Title Exp: August 2020

House Size: 37.27sq

#### Package Includes:

- Up to \$40,000 of upgrades (House specific)
- Developers Guidelines
- Fixed Site Costs
- Colorbond® roof
- 900mm Stainless Steel Upright Cooker
- 900mm Stainless Steel Canopy Rangehood
- Overhead Cabinets to the Kitchen
- Soft Close hinged doors and drawers
- Ducted Heating
- 6-star energy rating on BEST orientation



[www.fairhavenhomes.com.au](http://www.fairhavenhomes.com.au)

**Ivan Vercej**  
t: 0434867572  
e: [ivercej@fairhavenhomes.com.au](mailto:ivercej@fairhavenhomes.com.au)

**South East**  
, VIC