

Home & Land Package

escape
by **ARDEN**

**GET
STARTED
WITH
\$3K[#]**

**BETTER
INCLUSIONS
GUARANTEED**

ODESSA 226

4 2 2

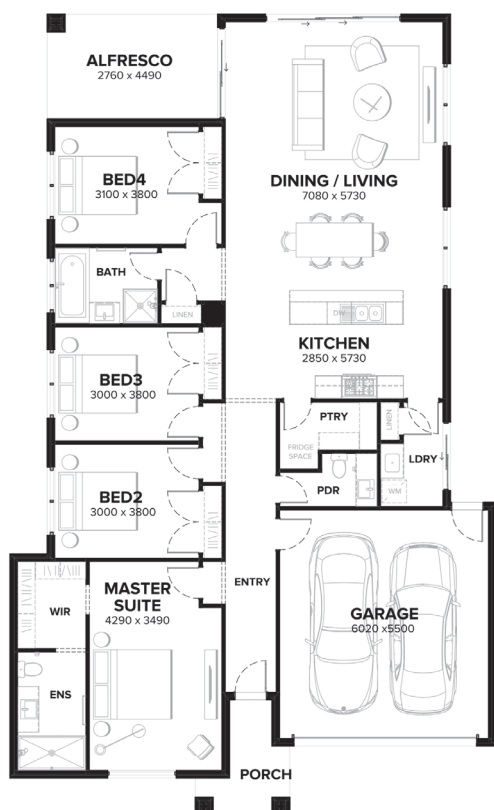
LOT 1914 (448 m²)

VIELO CIRCUIT, DELARAY, CLYDE NORTH

FIRST HOME BUYER PRICE

\$619,398*

FIXED PRICE: \$629,398



- ✓ Fixed site costs and connections
- ✓ Council and developer reqs
- ✓ Fully rendered Hebel (facade specific)
- ✓ Colorbond panel lift garage door with remote control
- ✓ 2590mm high ceilings to ground floor
- ✓ Floor coverings throughout
- ✓ 20mm Caesarstone benchtops to Kitchen
- ✓ 900mm Haier stainless steel oven, cooktop and rangehood
- ✓ Haier stainless steel fridge/freezer and dishwasher
- ✓ Phoenix chrome or matt black tapware

CONTACT Donna Millington 0407 944 088
ardenhomes.com.au



Price current at time of listing. *Pricing includes FHOG and is subject to SRO criteria (refer www.sro.vic.gov.au/first-home-owner#fhog). Pricing based on Developer supplied engineering plans and plan of subdivision and Arden Homes standard floor plan with pre-determined façade and preferred siting (alterations may incur additional charges). #Get started with \$3k means the client pays only \$3,000 until site start stage on the build. Subject to developer and council approval. Land supplied by developer and subject to availability. Package price does not include landscaping, furnishings, stamp duty, government, legal or bank charges. Images for illustrative purposes only and may depict upgrade options available at additional charges. Arden Homes reserves the right to withdraw or amend pricing, inclusions and promotion without notice. Speak to your New Home Consultant for more information. (CDB-U 48276). ©2020 Arden Homes. 26/08/2020