

Price includes standard floorplan with STANDARD STRUCTURE WITH CEDAR CLAD facade.



Artist impression. Furniture, landscaping, driveway, window furnishing and porch decking is not provided by Urbanedge Homes.

FIRST HOME BUYERS PRICE \$714,114 ^

FIXED PRICE HOUSE & LAND

Andu 4-34

Lot 1901, Vielo circ

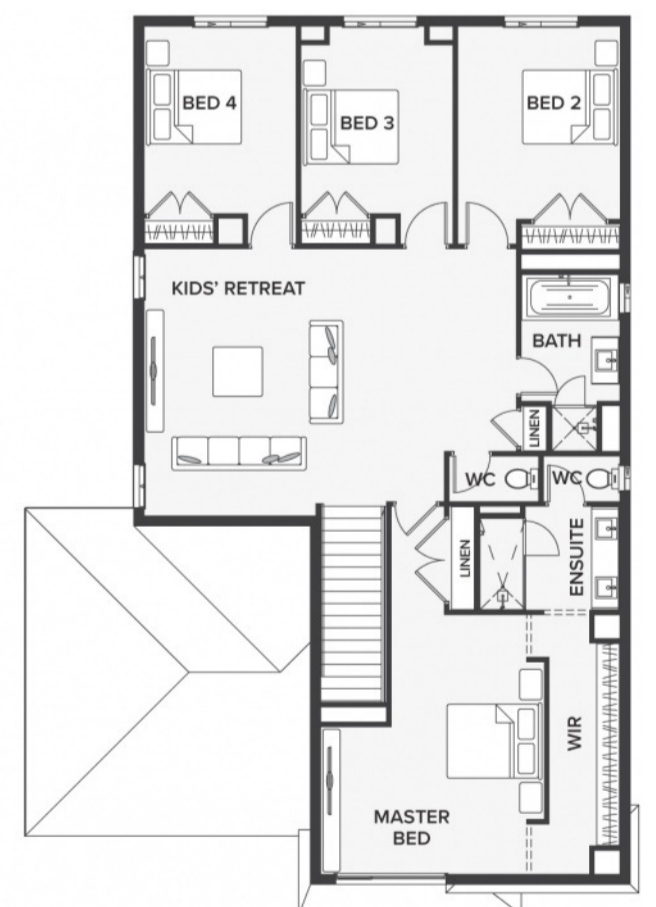
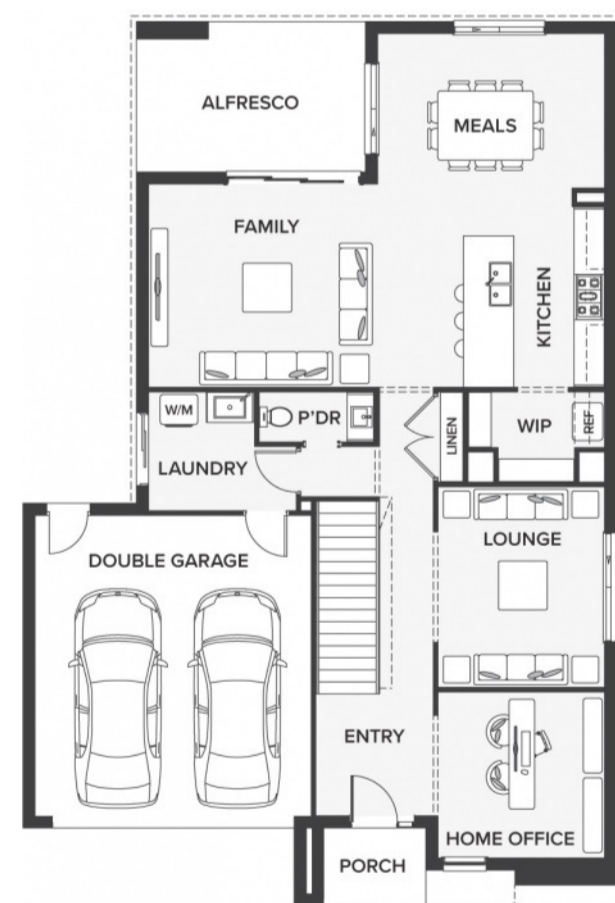
LAND SIZE: 448.00m²



313.44m² | 33.74 sqs

- ▲ Architecturally inspired fully rendered facade
- ▲ Brickwork or rendered foam above all ground floor windows and sliding doors
- ▲ Smeg Appliances to Kitchen
- ▲ Floor coverings throughout
- ▲ Silestone benchtops to Kitchen and Ensuite(s) Bathroom
- ▲ Base Cabinetry to Laundry
- ▲ and much more ...

edge
inclusions



Please Contact
Stephen Campbell
0438 579 620
stephenc@urbanedgehomes.com.au

LuxuryRedefined
urbanedgehomes.com.au