

**easy**  
LIVING

## EXCLUSIVE PACKAGE

fixed price

**\$686,800\***

first home owners \$676,800^

Images for illustrative purposes only & may depict upgrade options available at additional charges such as lighting, window furnishings, timber look garage door & timber windows. Pricing also excludes features not supplied by Carlisle, inc. fencing, landscaping, letterbox, docking & driveway. Facade details inc. entry door, window sizes & placements may vary between house types & sizes. Refer to working drawings for specific locations and sizes.

**why  
rent?**

first home owners  
**buy from**  
**\$337** PER WEEK\*

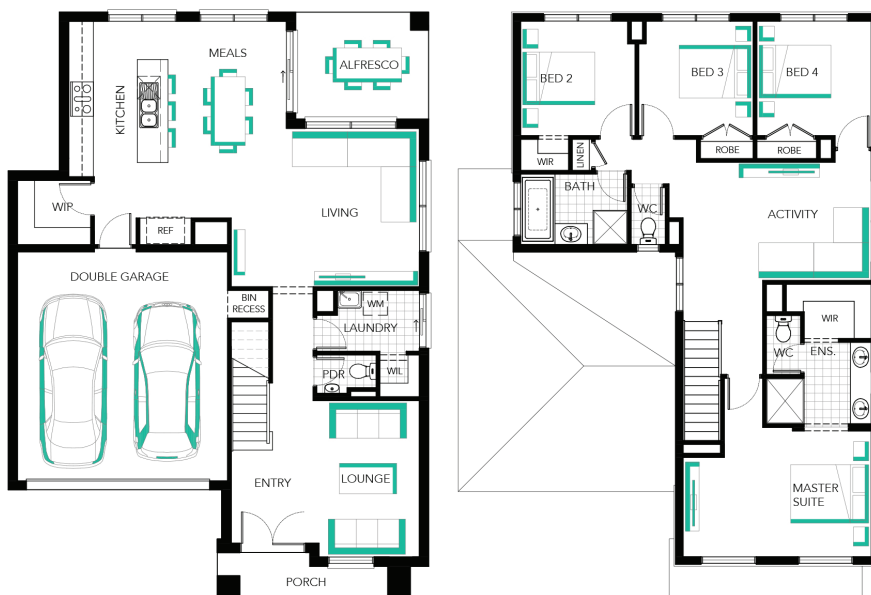
**Berkley 27**



**Lot 1952 (Turn-key) (294m<sup>2</sup>) Delaray, CLYDE NORTH**

### EasyLiving Inclusions##:

- ✓ FIXED PRICE SITE COSTS AND CONNECTIONS
- ✓ DEVELOPER AND COUNCIL REQUIREMENTS
- ✓ FLOORING TO ENTIRE HOME
- ✓ EVAPORATIVE COOLING
- ✓ 20MM CAESARSTONE BENCHTOPS TO KITCHEN
- ✓ 900MM WIDE STAINLESS STEEL UPRIGHT COOKER AND RANGEHOOD
- ✓ DISHWASHER
- ✓ OVERHEAD CUPBOARDS TO KITCHEN
- ✓ DRIVEWAY
- ✓ LANDSCAPING
- ✓ FENCING
- ✓ CLOTHESLINE
- ✓ LETTERBOX
- ✓ FLYSCREENS AND KEYED WINDOW LOCKS
- ✓ BLOCKOUT ROLLER BLINDS
- ✓ REMOTE CONTROL GARAGE DOOR
- ✓ QUALITY FIXTURES AND FITTINGS THROUGHOUT



### FOR ENQUIRIES CONTACT:

Customer Enquiry Team: 13 27 67 13 27 67 | w: [easylivingbycarlisle.com.au](http://easylivingbycarlisle.com.au)  
Or explore our Virtual Tours of our Display Homes from the comfort of your couch!



\*Price current as of 15/10/2021. Applies to EasyLiving Estate series only. Confirm land prices and availability prior to purchase. Subject to developer and council approval. Price does not include any stamp duty, government, legal or bank charges. Alterations may incur additional charges. Carlisle reserves the right to withdraw or amend pricing, inclusions and promo without notice. ##Items listed are standard for the EasyLiving Estate Series only, see standard inclusions brochure for full list of inclusions. ^Total package price minus \$10K FHOG or \$20K FHOG for regional estates (subject to SFO eligibility). #Repayment calculated on total package price, less 20% deposit inclusive of the \$10K First Home Owner's Grant or \$20K First Home Owner's Grant for regional estates (subject to SFO eligibility), less fees, not inclusive of lender's mortgage insurance, with a variable interest rate of 3.24% p.a., comparison rate of 3.27% p.a., and 5 years of Interest-Only repayments. For further details see your Sales Consultant and visit [carlislehomes.com.au/disclaimer/](http://carlislehomes.com.au/disclaimer/) for full details. ©2019 Carlisle Homes Pty Ltd. Registered Building Practitioner CDB-U50143.