



Griffith Facade

Facade image for illustration purposes only. Please refer to working drawings.

LIMITED TIME ONLY

**Timber  
Flooring Pack**

PLUS

**External Pack**

PLUS

**Coloured  
Concrete  
Driveway Pack**

## Ruby23

4 2 2 2

Lot 2115 Carbo Circuit CLYDE NORTH

Lot Size: 401m<sup>2</sup>

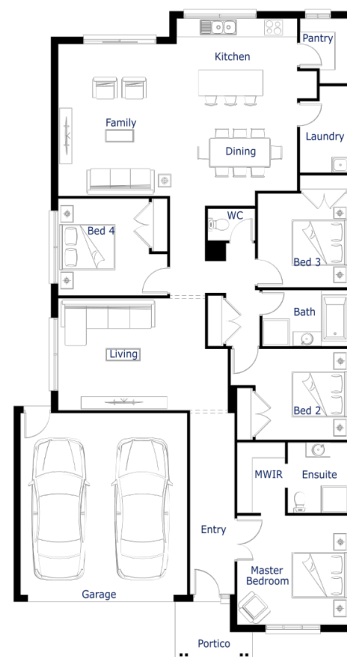
Griffith facade

### Fixed Price Package Inclusions

- + 2440MM HIGH CEILINGS TO GROUND & FIRST FLOORS OF DOUBLE STOREY HOMES
- + TECHNIKA BELLISSIMO 600MM STAINLESS STEEL OVEN
- + TECHNIKA BELLISSIMO 600MM STAINLESS STEEL COOKTOP
- + TECHNIKA BELLISSIMO 900MM STAINLESS STEEL OVEN CANOPY
- + COLORBOND ROLLER DOOR
- + GAS DUCTED HEATING
- + POLISHED EDGE MIRRORS TO FULL WIDTH OF VANITY
- + FIXED PRICE SITE COSTS
- + 5 WEEKS TO CONTRACT
- + INTERIOR DESIGN INFLUENCED COLOUR SCHEMES

**Contact: Kerrie Sullivan 0417946838**

[porterdavis.com.au](http://porterdavis.com.au)



\*Terms & Conditions: Package price is based on standard home, standard façade unless specified, builder's preferred siting and current promotion. Refer to sales consultant for actual working drawings for available façade options and inclusions. Pricing may vary due to actual land availability. Porter Davis reserves the right to change prices without notice. Fixed price packages are subject to developer's design review panel for final approval. \$2,000 non-refundable deposit only. First Home Buyer price less First Home Owner Grant subject to SRO eligibility criteria. If required via a town planning permit, client must provide landscaping and fencing etc at their own cost. Photos for illustration purposes only and include examples of upgrades not included in the package price. Refer to working drawings. Guaranteed site start subject to land title and finance availability. Geographic build zones apply. BAL rating up to 12.5 included, based on the standard home and specification. Should client variations after the requirements to achieve compliance, Porter Davis will debit or credit the client via a post contract variation. Package price correct at 22-06-2022.