



CARLISLE
HOMES

**BETTER
PACKAGE
DEALS**

✓ FIXED PRICE **✓ EXPERT ADVICE** **✓ BEST LOCATION**



LAND REBATE
APPLIED~

FIXED PRICE

\$588,700*

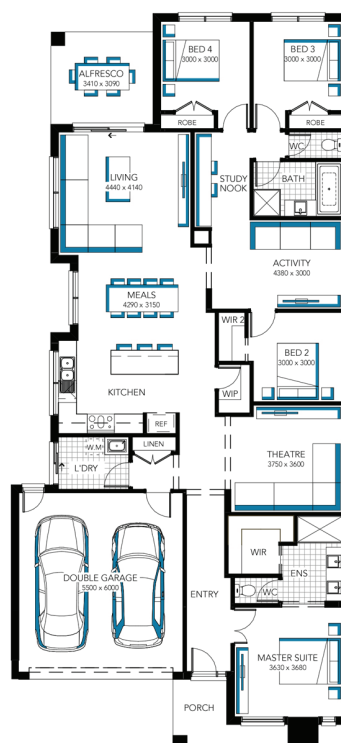
Images for illustrative purposes only & may depict upgrade options available at additional charges such as lighting, window furnishings, timber look garage door & timber windows. Pricing also excludes features not supplied by Carlisle, inc fencing, landscaping, letterbox, decking & driveway. Façade details inc entry door, window sizes & placements may vary between house types & sizes. Refer to working drawings for specific locations and sizes.



- ✓ FIXED PRICE SITE COSTS AND CONNECTIONS
- ✓ DEVELOPER AND COUNCIL REQUIREMENTS
- ✓ UP TO 2K OFF ALL FACADES
- ✓ DOUBLE GLAZING TO WINDOWS
- ✓ EVAPORATIVE COOLING SYSTEM
- ✓ CERAMIC TILES OR LAMINATE TIMBER AND CARPET
- ✓ 20MM CAESARSTONE BENCHTOPS TO KITCHEN, ENSUITE & BATHROOM
- ✓ 40MM CAESARSTONE EDGE WITH WATERFALL END PANELS TO ISLAND BENCH (DOUBLE STORIES)
- ✓ CLEAR GLASS SPLASH BACK
- ✓ TECHNIKA STAINLESS STEEL DISHWASHER
- ✓ 2110MM HIGH ALUMINIUM ENTERTAIN STACKER DOOR AND/OR ADDITIONAL ALUMINIUM SLIDING DOOR TO ALFRESCO
- ✓ FEATURE STAIRCASE BALUSTRADE
- ✓ DELUXE ELECTRICAL PACK PLUS ALARM SYSTEM
- ✓ COLORCOTE METAL ROOF TO SINGLE STOREY HOMES

Piermont 26MK2

Lot 401 (475m²) Waratah, MICKLEHAM



FOR ENQUIRIES CONTACT:

Customer Enquiry Team m: 13 27 67 | w: carlislehomes.com.au

Or visit: Waratah, 1 - 3 Bethany Way, MICKLEHAM VIC 3064

Open 5 days a week; Mon - Wed: 12pm - 5pm Thu - Fri: By appointment Weekends: 11am - 5pm



*Fixed Price current as of 22/10/2019.Pricing based on developer engineering plans & plan of subdivision. Hebel homes may be smaller than dimensions shown on the floorplan due the external wall thickness, see working drawings for Hebel home dimensions.Confirm land prices and availability prior to purchase. Community Infrastructure Levy & Asset Protection not included in pricing and must be arranged directly by client with developer (where applicable). Subject to developer & council approval. Package Price does not include any costs associated with Developer's Corner Façade treatment requirements (which will be priced by Carlisle Homes by way of Post Contract Variation), stamp duty, government, legal or bank charges. Refer to working drawings for specific locations and sizes. Alterations may incur additional charges. Carlisle reserves the right to withdraw or amend pricing, inclusions & promo without notice. Bushfire (BAL) requirements will be credited back to the client if Carlisle Homes receives confirmation that the house is not being constructed in a BAL designated area. This cannot be confirmed until site survey and property information from relevant authorities is received.**The Yes, it's included Promotion applies to new quotes & initial deposits on Carlisle's T-range Collection homes from 27th July 2019 & is available only in conjunction with the T-range 365 inclusions. See a Sales Consultant & visit carlislehomes.com.au/disclaimer/ for further details. Registered Building Practitioner CDB-U50143 ©2019 Carlisle Homes Pty Ltd.

-Fixed price inclusive of \$30,000 developer's rebate. Customers who buy a House & Land package need to enter into a land contract with the developer who owns the land & enter into a separate building contract with Carlisle Homes for the construction of the house.Land contract & land price is subject to developers approval, terms & conditions & Carlisle Homes makes no representation or guarantee in respect to the land contract or land price.