

ASPIRE ESTATE Fraser Rise

Johanna 240- 4 Bed

\$582,500

4  2  2 

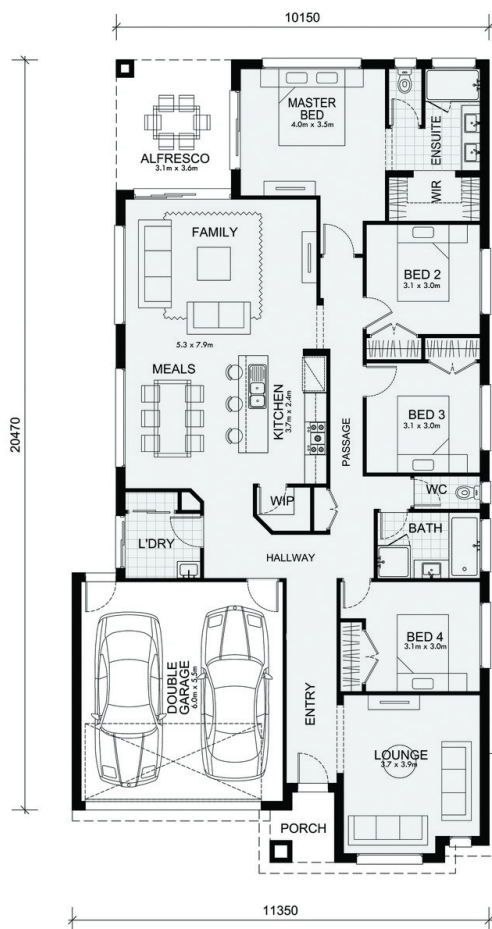


Lot 2223 Aspire Estate Fraser Rise

Land size: 396 sqm

Mimosa Homes Proudly Present

- Mimosa Homes Added Value Includes:
- Engineered  H1  Class Slab
- Council & OH&S Requirements (Excludes town planning and council dispensation fees)
- 25mPa Concrete for engineered waffle pod slab (Excludes alfresco & Porch)
- Price upfront before deposit (Inclusive of site costs and connections with h1 slab)
- Stained Timber Front Entry Door (Essential Range)
- Quality floor coverings throughout entire home
- Stone benchtop to kitchen (20mm)
- Overhead cupboards & wine rack (Above fridge cavity space)
- Stainless steel dishwasher & Microwave with trim kit
- Downlights to all living areas
- 3 coat paint system
- Flyscreens to all openable windows (Excludes sliding doors and fixed windows)



Contact: Steven Jovanovic

0439 332 657

steven.j@mimosahomes.com.au

www.mimosahomes.com.au



Land availability and pricing is subject to the development availability. Mimosa Homes reserves the right to amend specifications and price without notice. All plans and facades are indicative concepts only; and are not intended to be accurate depictions of the building, fencing, paths, driveways or landscaping and are not necessarily to scale all dimensions are approximate (refer to working drawings). Package prices are based on standard facades and standard inclusions.