



SILVER
PACK INCLUDED

HOME AND LAND

Images shown are for illustrative purposes only and may not represent the final product such as lighting, window furnishings, timber look garage door & timber windows. Façade details including entry door and window sizing may vary between house types. Pricing also excludes features such as fencing, landscaping, letterbox, decking, driveway and any notable features of the façade. Please speak with your sales consultant for further details.

LOT 2448, ASPIRE ESTATE, FRASER RISE (350M2)

FLOOR PLAN: BARAKEE 21_197
FACADE: STIRLING

FIXED PRICE

\$567,789

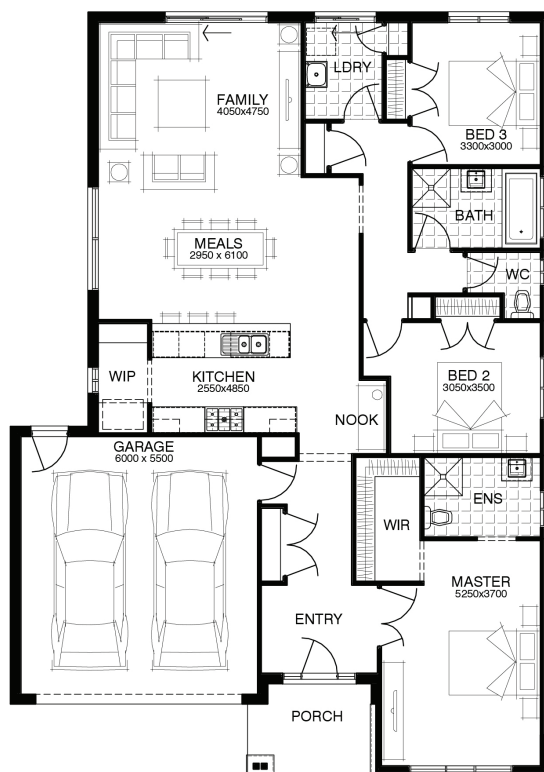
FIRST HOME OWNERS PRICE \$557,789

3 2 2 1 21sq



PACKAGE INCLUSIONS:

- ▼ LAMINATE TIMBER LOOK FLOORING TO ENTRY, KITCHEN & LIVING
- ▼ CARPET TO REMAINDER OF HOME
- ▼ 20MM CAESARSTONE BENCHTOP TO KITCHEN
- ▼ OVERHEAD CUPBOARDS TO KITCHEN
- ▼ BATHROOM ACCESSORIES
- ▼ BRICKWORK OVER WINDOWS
- ▼ UP TO 40M2 COLOUR THROUGH CONCRETE DRIVEWAY
- ▼ REMOTE TO GARAGE DOOR
- ▼ 20 DOWNLIGHTS



For enquiries please contact:

Tatjana Dokic
0448184746
Simonds.com.au

Metro West

VIC
tatjana.dokic@simonds.com.au

