



# HOME AND LAND

Images shown are for illustrative purposes only and may not represent the final product such as lighting, window furnishings, timber look garage door & timber windows. Facade details including entry door and window sizing may vary between house types. Pricing also excludes features such as fencing, landscaping, letterbox, decking, driveway and any notable features of the facade. Please speak with your sales consultant for further details.

LOT 2449, ASPIRE ESTATE, FRASER RISE (396M2)

FLOOR PLAN: BARAKEE 21\_197  
FACADE: BALLARINE

**FIXED PRICE**

**\$583,932**

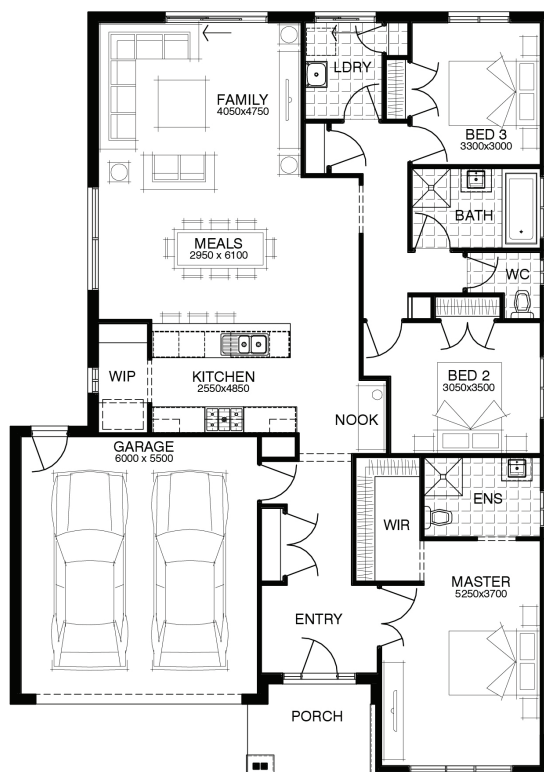
FIRST HOME OWNERS PRICE \$573,932

3 2 2 1 21sq



## PACKAGE INCLUSIONS:

- ▼ LAMINATE TIMBER LOOK FLOORING TO ENTRY, KITCHEN & LIVING
- ▼ CARPET TO REMAINDER OF HOME
- ▼ 20MM CAESARSTONE BENCHTOP TO KITCHEN
- ▼ OVERHEAD CUPBOARDS TO KITCHEN
- ▼ BATHROOM ACCESSORIES
- ▼ BRICKWORK OVER WINDOWS
- ▼ UP TO 40M2 COLOUR THROUGH CONCRETE DRIVEWAY
- ▼ REMOTE TO GARAGE DOOR
- ▼ 20 DOWNLIGHTS



**For enquiries please contact:**

Tatjana Dokic  
0448184746  
Simonds.com.au

Metro West

VIC  
tatjana.dokic@simonds.com.au

