

House and land package.

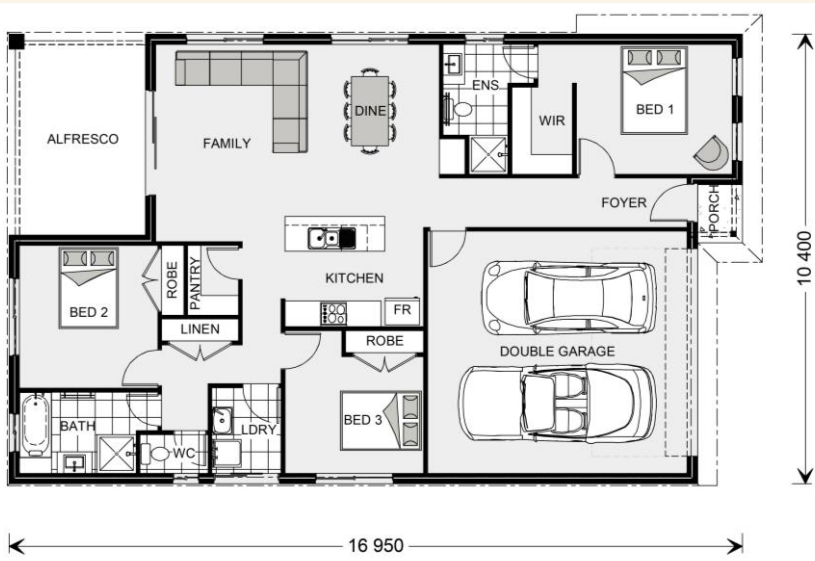


House and land package from \$ 572,326*

Address: Lot 2434 Stevo Way Fraser Rise (392m2)

Inclusions:

- + INCLUDES GOVERNMENT GRANTS \$35,000 AND \$10,000 FHOG IF ELIGIBLE*
- + FIXED SITE COST *
- Floor Coverings Throughout
- + 2.5 Ceiling Height, 20mm Stone to Kitchen
- + 900mm Appliances, Dishwasher
- + 3 Coat Paint System, Flyscreens to openable windows



*Classic facade floorplan depicted. Images and photographs may depict fixtures, finishes and features either not supplied by G.J. Gardner Homes or not included in any price stated. These items include furniture, swimming pools, pool decks, fences, landscaping - including planter boxes, retaining walls, water features, pergolas, screens and decorative landscaping items such as fencing and outdoor kitchens and barbeques. For detailed home pricing, please talk to a new homes consultant.

The Nova 170 —Executive.

 3  2  2

Give us a call or drop in for a chat today.

Office:

Office on 8360 9167

Call: 0477 775 750

Email: angie.robinson@gjgardner.com.au

Or visit gjgardner.com.au

Welcome **home.**

G.J. Gardner. HOMES