



## HOUSE & LAND

ASPIRE, FRASER RISE

# \$449,900

Lot 2431 Stevo Way, Fraser Rise  
Land Size: 198m<sup>2</sup>

3 2 2

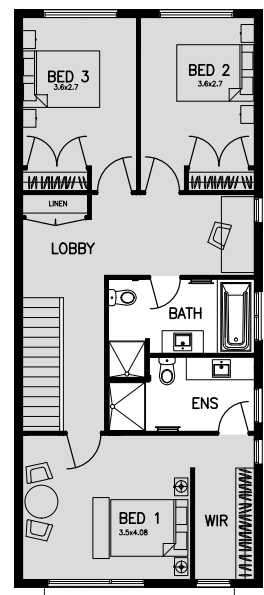
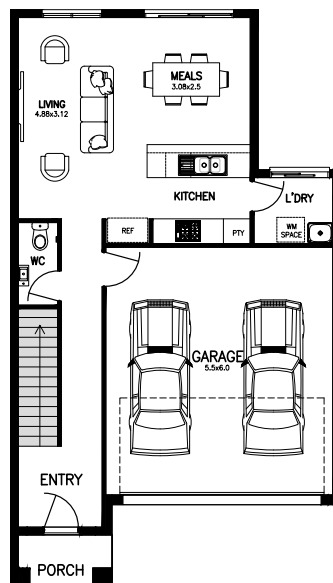
Great value 3 bedroom home, fixed price with complete turn-key inclusions.

- ▶ Full turn-key inclusions
- ▶ 25 year structural guarantee
- ▶ 2590mm high ceilings to ground floor
- ▶ 600mm European Smeg Appliances
- ▶ 600mm European Smeg Dishwasher
- ▶ 20mm Stone benchtops to kitchen, bathroom and ensuite
- ▶ Carpets and tiles throughout
- ▶ Flyscreens and blinds to all windows
- ▶ Designer facade as depicted
- ▶ Full front and rear landscaping
- ▶ Fencing to all boundaries
- ▶ Letterbox and clothesline
- ▶ Fixed site costs including rock removal
- ▶ Plus much more!

All images are artist impression only, furniture and some fixtures and fittings are not included. Price is correct at time of publication and is subject to change without notice.

## \$25k GRANT READY\*

\*Terms and Conditions Apply.  
Visit website for details.



\*Terms and conditions apply. Eligibility requirements apply. Please visit <https://nostrahomes.com.au/terms.html> for more information.

**FOR MORE INFORMATION CONTACT ASPIRE LAND SALES OFFICE 03 9684 8154**