

House and land package.

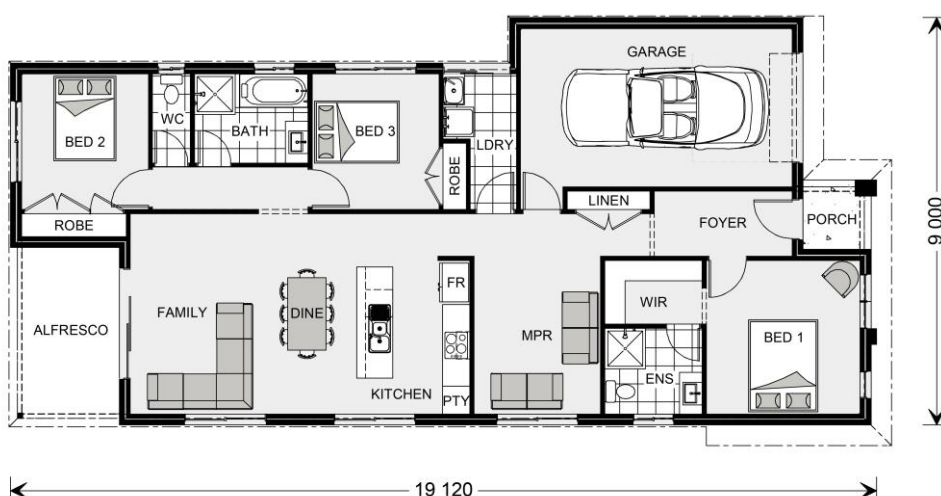


House and land package from \$567,258 *

Address: Lot 2405 Mamie Blvd Fraser Rise (400m2)

Inclusions:

- + TAKE OFF \$35,000 WORTH OF GOVERNMENT GRANTS*
FIXED SITE COST*
- + Floor Coverings Through out
- + 2.5 Ceiling Height, 20mm Stone Throughout
Overhead Cabinets to Kitchen



*Images and photographs may depict fixtures, finishes and features either not supplied by G.J. Gardner Homes or not included in any price stated. These items include furniture, swimming pools, pool decks, fences, landscaping - including planter boxes, retaining walls, water features, pergolas, screens and decorative landscaping items such as fencing and outdoor kitchens and barbecues. For detailed home pricing, please talk to a new homes consultant.

The Stonehaven 153 - Classic.



Give us a call or drop in for a chat today.

Office:
Office 8360 9167

Call: 8360 9167
Email: pointcook@gjgardner.com.au
Or visit gjgardner.com.au

Welcome **home.**

G.J. Gardner. HOMES