



HOUSE & LAND

\$549,950*

ASPIRE ESTATE – FRASER RISE

Lot 2609 Anna Road
Fraser Rise VIC 3335

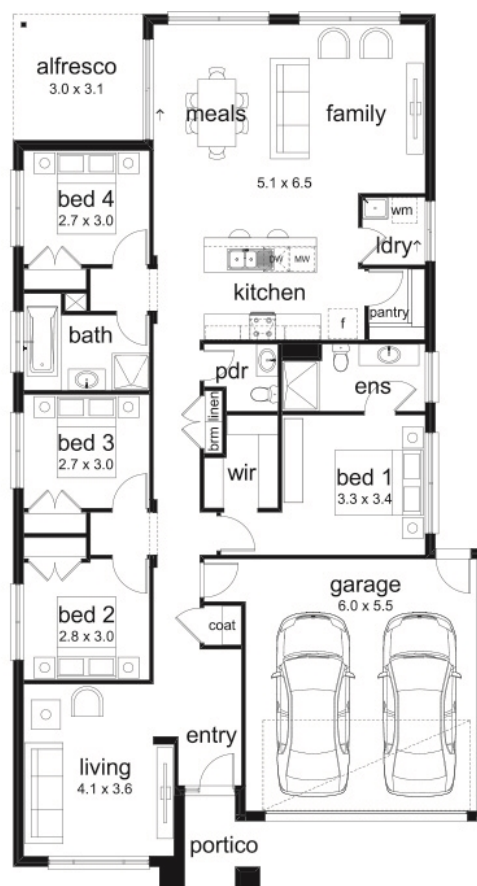
4 2 2 2 1

Jade 23 Livia Façade

(Aspirations)

Home size: 22.44sq Land size: 350m²

- ✓ Aspirations Inclusions
- ✓ Fixed Site Costs
- ✓ Developer/Estate Covenant Requirements
- ✓ Water Tank
- ✓ NBN/Opticomm/Redtrain/Multinet/CNT Corp. connection
- ✓ 2580mm ceiling height to ground floor
- ✓ Double Garage
- ✓ Sectional Garage Door
- ✓ Remote control to garage door
- ✓ Flyscreens
- ✓ Stainless Steel Appliances
- ✓ 900mm Technika appliance pack
- ✓ Gas ducted heating
- ✓ Floor Coverings
- ✓ Current Promotion
- ✓ Designer front entry door
- ✓ Lockable internal access door from garage
- ✓ Overhead cupboards with bulkhead above to kitchen
- ✓ 35m² of colour-on concrete to driveway and portico
- ✓ Feature Render



aspire
FRASER RISE

Go to **dennisfamily.com.au** or call
1800 DENNIS for more information.

Gagan Singh 0408 307 514
Reference HL0036541