



HOUSE & LAND

\$583,050*

ASPIRE ESTATE – FRASER RISE

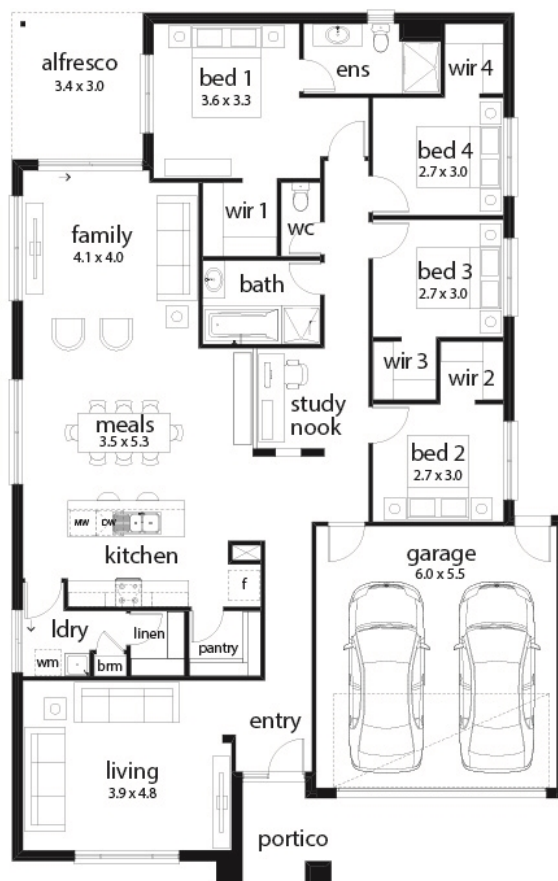
Lot 2611 Anna Road
Fraser Rise VIC 3335

4 2 2 2 1

Pearl 24 Livia Façade
(Aspirations)

Home size: 24.42sq Land size: 392m²

- ✓ Aspirations Inclusions
- ✓ Fixed Site Costs
- ✓ Developer/Estate Covenant Requirements
- ✓ Water Tank
- ✓ NBN/Opticom/Redtrain/Multinet/CNT Corp. connection
- ✓ 2580mm ceiling height to ground floor
- ✓ Double Garage
- ✓ Sectional Garage Door
- ✓ Remote control to garage door
- ✓ Flyscreens
- ✓ Stainless Steel Appliances
- ✓ 900mm Technika appliance pack
- ✓ Gas ducted heating
- ✓ Floor Coverings
- ✓ Current Promotion
- ✓ Designer front entry door
- ✓ Lockable internal access door from garage
- ✓ Overhead cupboards with bulkhead above to kitchen
- ✓ 35m² of colour-on concrete to driveway and portico
- ✓ Feature Render



aspire
FRASER RISE

Go to **dennisfamily.com.au** or call
1800 DENNIS for more information.

Gagan Singh 0408 307 514
Reference HL0036559