



Floor Plan

Napier 25

Address

Lot 2724 Slavko Drive, Fraser Rise

Estate

Aspire

Title Status

Q1, 2022

Land Area (sqm)

14x28 392sqm

Build Area (sq)

25.32sq

\$615,200

(Price Includes FHOG)

4 2 2

Turn Key Inclusions

Fixed Site Cost upto 700mm fall

2740mm (9ft) High ceiling to single storey

40mm stone bench to kitchen

900mm wide rangehood

900mm cooktop and oven

3 coat paint finish

Floor to ceiling tiles in ensuite

Double vanity with stone bench top to ensuite

Twin shower to ensuite- choice of chrome or matte black

Niche to ensuite & bathroom to internal wall only (400x400mm)

Phoenix Range designer tapware - choice of chrome or matte black

2340mm high x 1020mm wide stained entry door

Timber look garage door - builders range

Option of colorbond or Striata series flat tiled roof

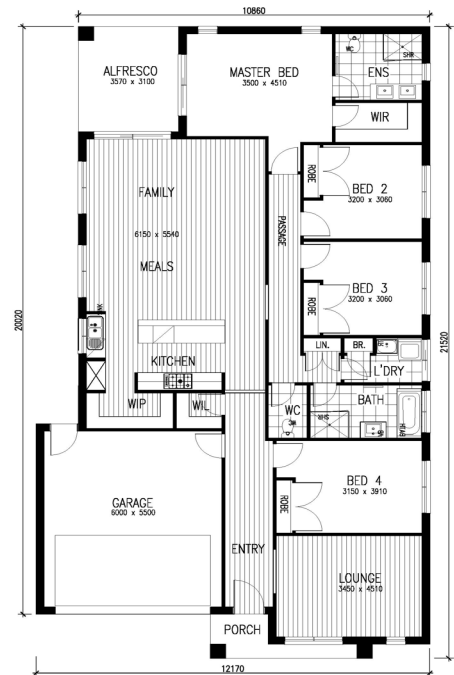
Internal LED downlights throughout upto 30 for single storey

20mm Stone benchtop to laundry (standard trough cabinet only)

450mm stud gap to external load-bearing walls

Stacker glass doors to family area in-lieu of standard sliding doors (design specific)

And Much More



Find Out More Today, Contact:-

Aaron Millar

0401 602 243

aaron@ridgewaterhomes.com.au



Ridgewater Homes reserve the right to alter any price without notice. Subject to developer design approval. Conditions apply. These photos and images are for illustrative purposes only and may depict upgrade options available from Ridgewater Homes at additional charges such as lighting, window furnishings, landscaping, driveway, paving and timber windows. The price also excludes features not supplied by Ridgewater Homes such as gardens, fencing and decking. Any alterations and upgrades may incur additional costs. The price does not include stamp duty, legal fees or other costs incurred with the purchase of the land. Please consult a Ridgewater Homes sales representative for further information and detailed pricing. All designs are the property of Ridgewater Homes and must not be used, reproduced, copied or varied, wholly or in part without written permission from an authorised Ridgewater Homes representative. Copyright. Ridgewater Property Group Pty Ltd. Builders Registration number CDBU 48780.