

**SIMONDS**  
BUILDING HOMES SINCE 1949



Journey INTO STYLE | 2021  
**EMBARK  
UPGRADES**

# HOME AND LAND

Images shown are for illustrative purposes only and may not represent the final product such as lighting, window furnishings, timber look garage door & timber windows. Facade details including entry door and window sizing may vary between house types. Pricing also excludes features such as fencing, landscaping, letterbox, decking, driveway and any notable features of the facade. Please speak with your sales consultant for further details.

LOT 3730, ASPIRE ESTATE, FRASER RISE (395M2)

**FLOOR PLAN: BARAKEE 21\_197**  
**FACADE: THORSBOURNE**

**FIXED PRICE**

**\$658,565**

FIRST HOME OWNERS PRICE \$648,565

3 2 2 1 21sq

ADD A TOUCH OF LUXURY TO YOUR HOME TODAY & SAVE!

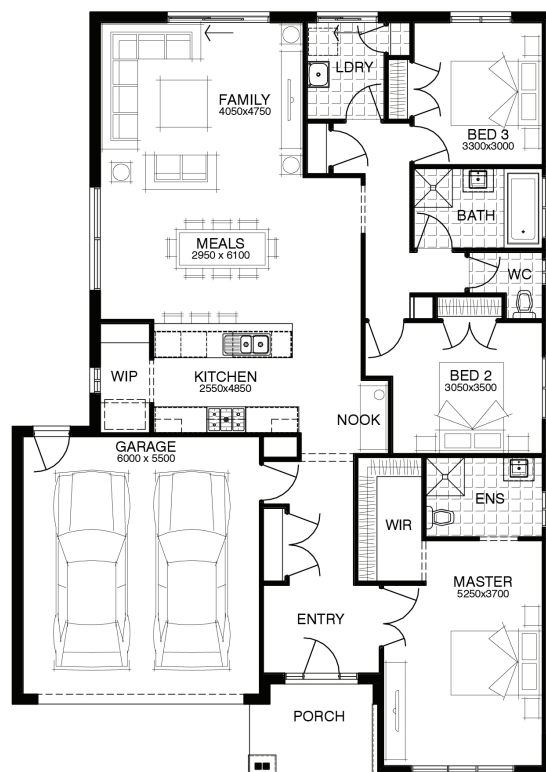


**Journey**  
INTO STYLE | 2021

SAVE ON  
LUXURY

## PACKAGE INCLUSIONS:

- ▼ DEVELOPER & COUNCIL REQS
- ▼ FLOORING THROUGHOUT
- ▼ 20MM CAESARSTONE BENCHTOP TO KITCHEN
- ▼ OVERHEAD CUPBOARDS TO KITCHEN
- ▼ 20 DOWNLIGHTS
- ▼ BRICKWORK OVER WINDOWS
- ▼ COLOURED CONCRETE DRIVEWAY UP TO 40M2
- ▼ REMOTE TO GARAGE DOOR
- ▼ NBN PROVISIONS (EXCLUDES HUB)
- ▼ TOWEL RAILS & TOILET ROLL HOLDERS



**For enquiries please contact:**

Tatjana Dokic  
0448184746  
[Simonds.com.au](http://Simonds.com.au)

Metro West

VIC  
[tatjana.dokic@simonds.com.au](mailto:tatjana.dokic@simonds.com.au)

**aspire**  
FRASER RISE

All Fixed Price Home and Land packages are subject to Developer and Council approval and is based on Simonds standard floor plan with preferred siting (without alterations). Package Price does not include stamp duty, government, legal or bank charges. Community Infrastructure Levy and Asset Protection Permit are not included in pricing and is to be arranged by the client directly with the Developer (if applicable). Any alterations may incur additional charges. Confirm land price and availability prior to purchase. Simonds reserves the right to withdraw or amend pricing, inclusions and promotion at any time without notice. Please refer to the terms and conditions at [www.simonds.com.au/terms-and-conditions](http://www.simonds.com.au/terms-and-conditions). This package applies to VIC Range range only. Please speak with your sales consultant for further details. Pricing is current at 08/12/2021.