

# Harrison 27

GUEST SUITE OPTION Grove Facade

**\$865,174**

4.0 2.5 2.0



**Lot 3002, Maryanne Way,**  
**Fraser Rise Park Front**  
Aspire Estate

House Area: 256.88 m.sq

Land Area: 445 m.sq

Title Release: Q1 2023

House Price: \$410,274

Land Price: \$454,900

**Total Price: \$865,174**

## Turnkey Inclusions



Full turnkey package



Fixed Price (including site costs)



Split cooler to the Family/Meals Area



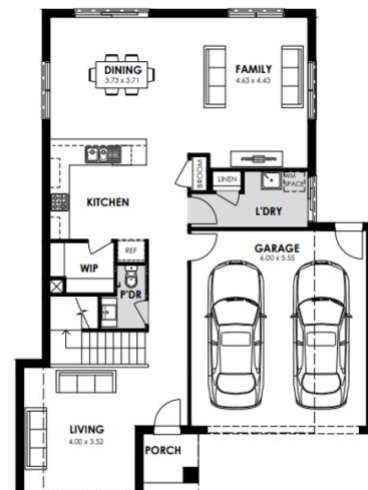
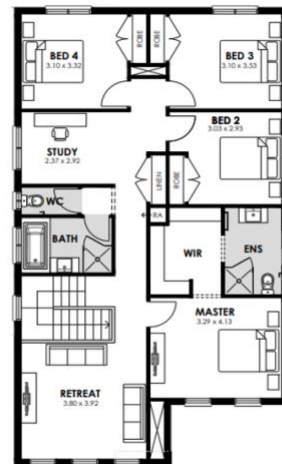
Roller blinds to all windows



Quality carpet & Timber Laminate flooring throughout



Fully landscaped front & rear gardens, including coloured concrete driveway, path & rear outdoor living area fences to sides & rear, clothesline & letterbox. 3 Coat Low emission paint system. 2590 High Ceilings to ground floor, 20mm stone to Kitchen & Bathrooms and stainless steel appliances plus more...



Contact Sue Wilson  
0418 387 295  
sue@suewilsonproperty.com.au

www.suewilsonproperty.com.au

