

**METRO**

SINGLE &amp; DOUBLE STOREY HOMES

RISE UPGRADES

**\$12,500\***

Plus

FLOORING PACK 'A'

Service based on 100% of required floor area with 20% extra.  
The 'Rise' upgrade pack  
for \$12,500 (incl. flooring and fix) is \$12,500 (incl. of \$12,500).Lot 3517, Aspire Estate - Fraser Rise (373)m<sup>2</sup>

FIXED PRICE

**\$729,193\***

\*First home owners Price - \$719,193

**EMERSON 22\_205****TRIBECA**

4



2



2



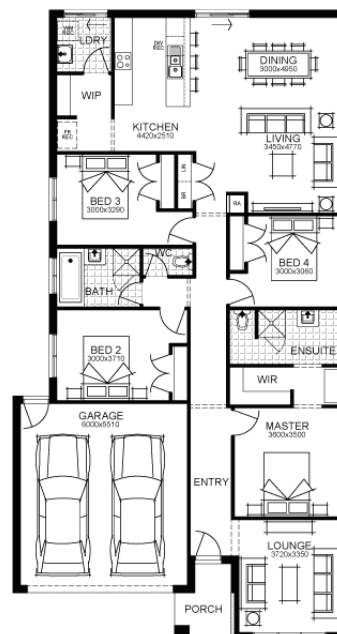
2



22sq

**PACKAGE INCLUSIONS:**

- ◆ Developer & Council requirements
- ◆ Floor coverings to entire house
- ◆ Coloured concrete driveway & path
- ◆ Euro stainless steel cooktop & oven
- ◆ Tiled skirting to bathrooms
- ◆ Ducted heating
- ◆ R2.5 insulations batts to ceiling & sisalation to walls
- ◆ 6 star energy rating
- ◆ Estate covenants
- ◆ And much more!

**For enquiries please contact:****Tatjana Dokic - 0448184746****tatjana.dokic@simonds.com.au** [simonds.com.au](http://simonds.com.au)**SIMONDS**  
BUILDING HOMES SINCE 1949

All Fixed Price Home and Land packages are subject to Developer and Council approval and is based on Simonds standard floor plan with preferred siting (without alterations). Package Price does not include stamp duty, government, legal or bank charges. Community Infrastructure Levy and Asset Protection Permit are not included in pricing and is to be arranged by the client directly with the Developer (if applicable). Any alterations may incur additional charges. Confirm land price and availability prior to purchase. Simonds reserves the right to withdraw or amend pricing, inclusions and promotion at any time without notice. Please refer to the terms and conditions at [www.simonds.com.au/terms-and-conditions](http://www.simonds.com.au/terms-and-conditions). This package applies to VIC Metro range only. Please speak with your sales consultant for further details. Pricing is current at 08/11/2022.