



Fixed Price HOME AND LAND \$800,603

FIRST HOME OWNERS PRICE

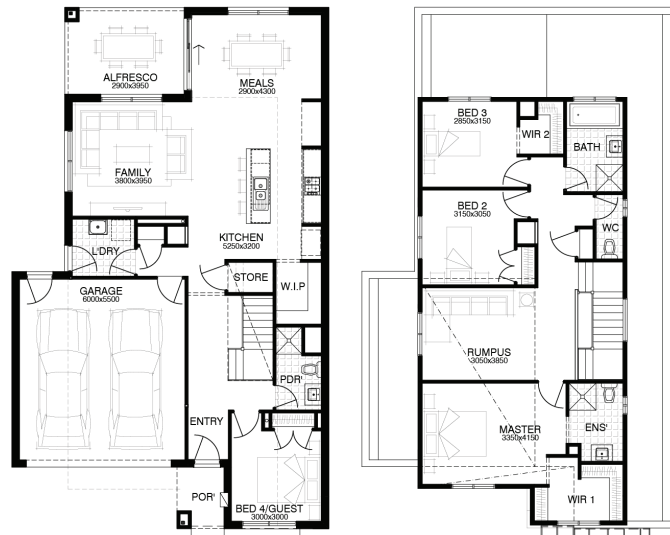
LOT 3539 | ASPIRE ESTATE FRASER RISE

4 3 2 2 26sqrs

FLOORPLAN: WHITEHAVEN

FACADE: MURRAY

Width 8.7m Length 17.63m Building Area 104.08m² Total Area 241.54m² LANDSIZE: 294m²



PACKAGE INCLUSIONS:

- DEVELOPER & COUNCIL REQ'S
- FLOORING THROUGHOUT
- 20MM CAESARSTONE BENCHTOP TO KITCHEN
- OVERHEAD CUPBOARDS TO KITCHEN
- 20 DOWNLIGHTS
- BRICKWORK OVER WINDOWS
- COLOURED CONCRETE DRIVEWAY UP TO 40M2
- REMOTE TO GARAGE DOOR
- NBN PROVISIONS (EXCLUDES HUB)

For enquiries please contact: Tatjana Dokic 0448184746 tatjana.dokic@simonds.com.au



simonds.com.au

SIMONDS
THE GREAT AUSTRALIAN BUILDER

All Fixed Price Home and Land packages are subject to Developer and Council approval and is based on Simonds standard floor plan with preferred siting (without alterations). Package Price does not include stamp duty, government, legal or bank charges. Community Infrastructure Levy and Asset Protection Permit are not included in pricing and is to be arranged by the client directly with the Developer (if applicable). Any alterations may incur additional charges. Confirm land price and availability prior to purchase. Simonds reserves the right to withdraw or amend pricing, inclusions and promotion at any time without notice. Please refer to the terms and conditions at www.simonds.com.au/terms-and-conditions. This package applies to VIC New Living Small Lot range only. Please speak with your sales consultant for further details. Pricing is current at 18/06/2022.