

Simonds Homes Range

VICTORIA

ELEVATE
UPGRADESUP TO
\$39,100*
WORTH OF INCLUSIONS
FOR JUST **\$5,000***Lot 3540, Aspire Estate - Fraser Rise (295)m²

FIXED PRICE

\$781,318*

*First home owners Price -

ALTONA 22_211

LACHLAN



3



2



2



1



22sq

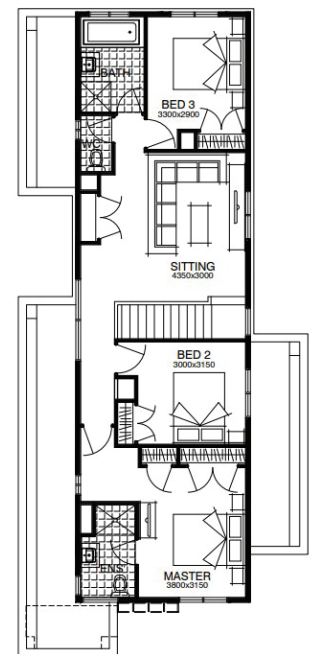
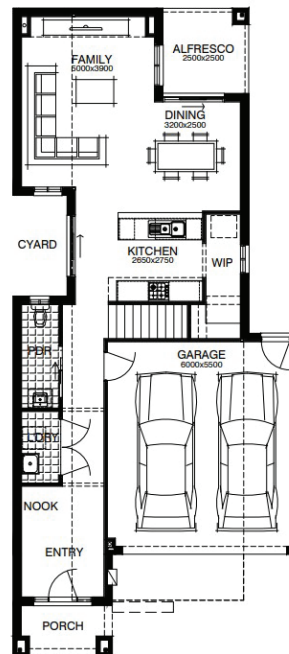
PACKAGE INCLUSIONS:

- ▼ Developer & Council requirements
- ▼ Floor coverings to entire house
- ▼ Coloured concrete driveway & path
- ▼ Euro stainless steel cooktop & oven
- ▼ Tiled skirting to bathrooms
- ▼ Ducted heating
- ▼ R2.5 insulations batts to ceiling & sisalation to walls
- ▼ 6 star energy rating
- ▼ Estate covenants
- ▼ And much more!

For enquiries please contact:

Tatjana Dokic - 0448184746

tatjana.dokic@simonds.com.au

 simonds.com.au

All Fixed Price Home and Land packages are subject to Developer and Council approval and is based on Simonds standard floor plan with preferred siting (without alterations). Package Price does not include stamp duty, government, legal or bank charges. Community Infrastructure Levy and Asset Protection Permit are not included in pricing and is to be arranged by the client directly with the Developer (if applicable). Any alterations may incur additional charges. Confirm land price and availability prior to purchase. Simonds reserves the right to withdraw or amend pricing, inclusions and promotion at any time without notice. Please refer to the terms and conditions at www.simonds.com.au/terms-and-conditions. This package applies to VIC New Living Small Lot range only. Please speak with your sales consultant for further details. Pricing is current at 09/11/2022.