

# Zylo 8A



Townhouse from

\$611,900\*



Lot 2760



VERV

## Key Features and Inclusions

- > Full turnkey package
- > Architecturally designed home
- > Higher ceilings throughout
- > Stone benchtops throughout
- > Floor to ceiling tiles to all wet areas
- > LED downlights throughout
- > ILVE appliances

## Lot Size

168m<sup>2</sup>

## House Specifications

Ground Floor: 74.11m<sup>2</sup>  
First Floor: 75.93m<sup>2</sup>  
Garage: 22.74m<sup>2</sup>  
**Total: 172.78m<sup>2</sup>**

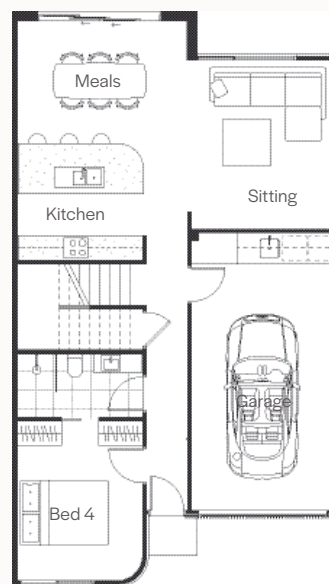
For more information contact:

Nick Anagnostou

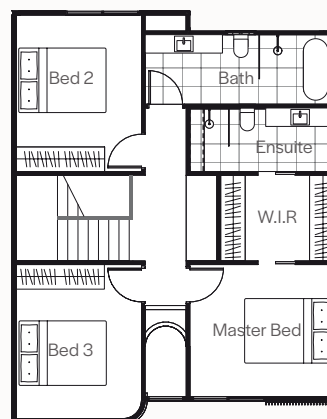
0434 416 544

n.anagnostou@oliverhume.com.au

Ground Floor



First Floor



\*Price based on standard inclusions and facade. Image depicts upgrade items not included in the price.

This plan is intended to give an indication of the proposed layout only and may vary without notice. It is not the actual lot for sale. Individual features such as furniture and/or vehicles are not included. Images are artists' impression for illustrative purposes only. Please ask our sales advisor or refer to contract drawings and site plans for exact dimensions and setback. Facade finishes, materials and colours may vary.