



RISE UPGRADES
\$12,500*
Plus
FLOORING PACK 'A'

HOME AND LAND

Images shown are for illustrative purposes only and may not represent the final product such as lighting, window furnishings, timber look garage door & timber windows. Façade details including entry door and window sizing may vary between house types. Pricing also excludes features such as fencing, landscaping, letterbox, decking, driveway and any notable features of the façade. Please speak with your sales consultant for further details.

LOT 3502, ASPIRE ESTATE, FRASER RISE (400M2)

FLOOR PLAN: GRAMERCY 22_205
FACADE: INTREPID

FIXED PRICE
\$736,293

FIRST HOME OWNERS PRICE \$726,293

4 🚗 2 🍷 2 🚗 1 🚗 22sq 📏

RISE
UPGRADES

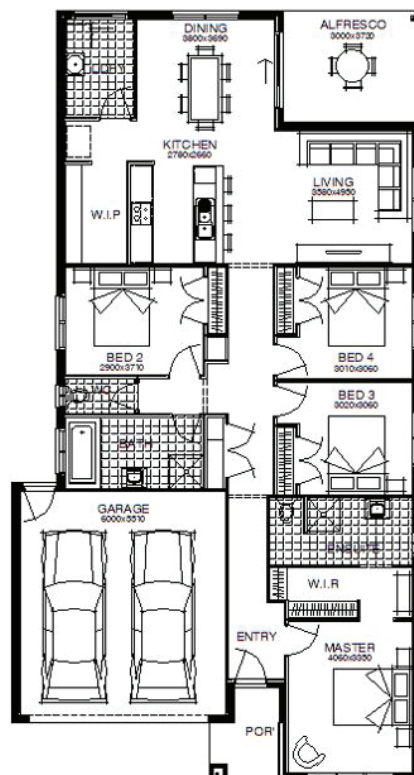


RISE ABOVE
THE REST

GET UP TO
\$44,000*
WORTH OF INCLUSIONS
FOR JUST \$15,000*

PACKAGE INCLUSIONS:

- ▼ DEVELOPER & COUNCIL REQs
- ▼ FLOORING THROUGHOUT
- ▼ 20MM CAESARSTONE BENCHTOP TO KITCHEN
- ▼ OVERHEAD CUPBOARDS TO KITCHEN
- ▼ 20 LED DOWNLIGHTS
- ▼ BRICKWORK OVER WINDOWS
- ▼ 900MM APPLIANCES
- ▼ DISHWASHER
- ▼ TOWEL RAILS & TOILET ROLL HOLDERS
- ▼ REMOTE TO GARAGE DOOR



For enquiries please contact:

Tatjana Dokic
0448184746
Simonds.com.au

Metro West

VIC
tatjana.dokic@simonds.com.au

aspire
FRASER RISE