

**METRO**

SINGLE &amp; DOUBLE STOREY HOMES

**RISE UPGRADES  
\$12,500\***

Plus

**FLOORING PACK 'A'**Service includes all floor coverings to the entire house, including the kitchen, laundry and bedrooms. The price is based on the standard flooring options available. For more information, please contact your sales consultant.**Lot 3505, Aspire Estate - Fraser Rise (375)m<sup>2</sup>****FIXED PRICE****\$714,195\***

\*First home owners Price - \$704,195

**GRAMERCY 19\_176****CLINTON**

4



2



2



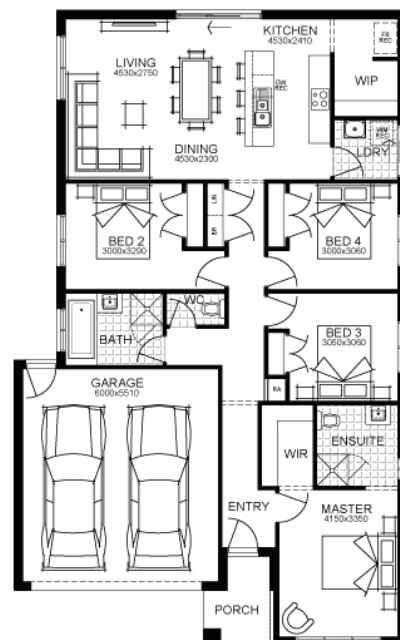
1



19sq

**PACKAGE INCLUSIONS:**

- ◆ Developer & Council requirements
- ◆ Floor coverings to entire house
- ◆ Coloured concrete driveway & path
- ◆ Euro stainless steel cooktop & oven
- ◆ Tiled skirting to bathrooms
- ◆ Ducted heating
- ◆ R2.5 insulations batts to ceiling & sisalation to walls
- ◆ 6 star energy rating
- ◆ Estate covenants
- ◆ And much more!

**For enquiries please contact:****Tatjana Dokic - 0448184746****tatjana.dokic@simonds.com.au**

simonds.com.au

All Fixed Price Home and Land packages are subject to Developer and Council approval and is based on Simonds standard floor plan with preferred siting (without alterations). Package Price does not include stamp duty, government, legal or bank charges. Community Infrastructure Levy and Asset Protection Permit are not included in pricing and is to be arranged by the client directly with the Developer (if applicable). Any alterations may incur additional charges. Confirm land price and availability prior to purchase. Simonds reserves the right to withdraw or amend pricing, inclusions and promotion at any time without notice. Please refer to the terms and conditions at [www.simonds.com.au/terms-and-conditions](http://www.simonds.com.au/terms-and-conditions). This package applies to VIC Metro range only. Please speak with your sales consultant for further details. Pricing is current at 09/11/2022.