

Lot 3515, Aspire Estate - Fraser Rise (456)m<sup>2</sup>

FIXED PRICE

**\$759,379\***

\*First home owners Price -

BROCK 22\_202

VENNEL



4



2



2



2



21sq

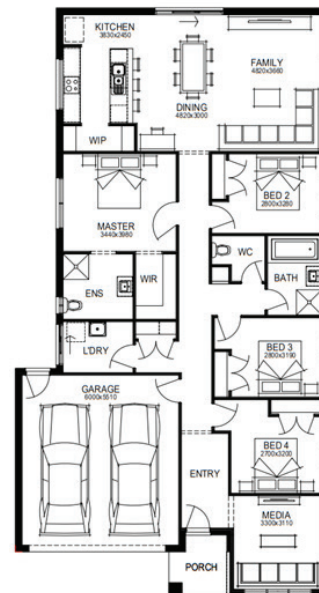
**PACKAGE INCLUSIONS:**

- Developer & Council requirements
- Floor coverings to entire house
- Coloured concrete driveway & path
- Euro stainless steel cooktop & oven
- Tiled skirting to bathrooms
- Ducted heating
- R2.5 insulations batts to ceiling & sisalation to walls
- 6 star energy rating
- Estate covenants
- And much more!

**For enquiries please contact:**

Tatjana Dokic - 0448184746

tatjana.dokic@simonds.com.au


 [simonds.com.au](http://simonds.com.au)

**SIMONDS**  
 BUILDING HOMES SINCE 1949