



SABA 250

\$760,000

**Lot 3533 Gumtree Way
Fraser Rise**

4  **2**  **2** 

Mimosa Homes Proudly Presents

The Saba 250 House and Land Package!

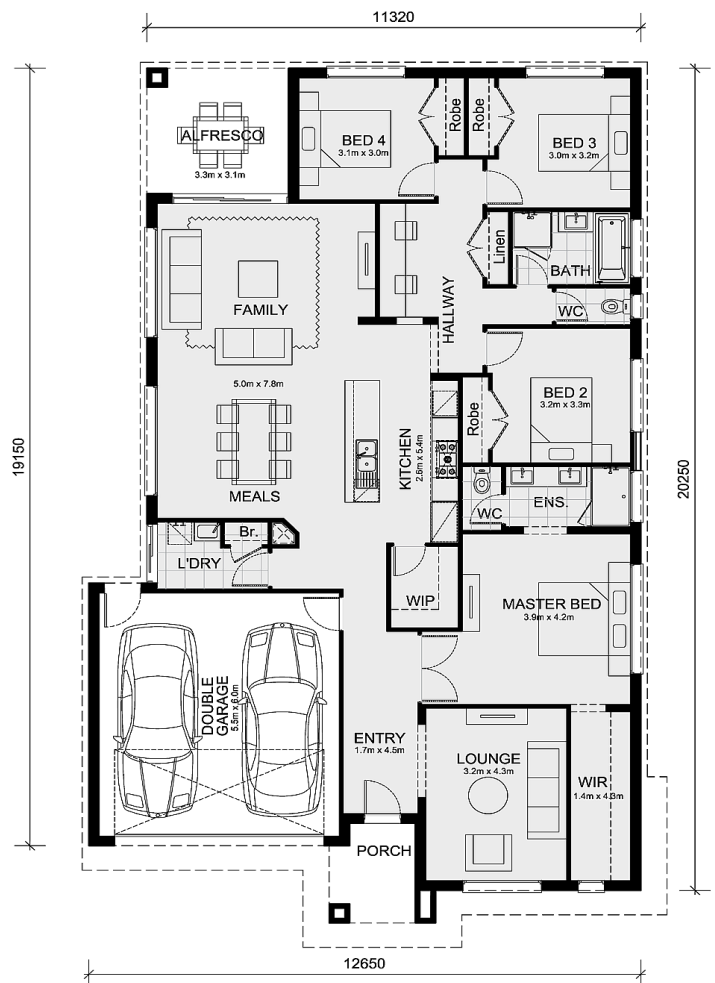
* Experience The Mimosa Homes Difference!

* Mimosa Homes Added Value Inclusions:

- Inclusive of site costs & connections with H1 class slab as per standard inclusions!
- Range of facades including feature render!
- Quality floor coverings throughout entire home!
- Higher ceilings 2700mm!
- Downlights to living areas!
- Stone bench top to kitchen!
- 900mm S/S upright oven and cook top with S/S canopy rangehood!
- Stainless steel Dishwasher and Microwave with trim kit!
- Overhead cupboards & wine rack! (Design specific)
- Remote control panel sectional lift garage door!
- 6 star energy with solar hot water!
- Driveway!
- Flexible floor plans & so much more!

CALL BUILDER DIRECT!

All plans and facades are indicative concepts only and are not intended to be accurate depictions.



Area Details

Land Size 392sqm Building Size 232sqm

Contact: Maretta Paila
maretta@mimosahomes.com.au

0407 452 452
www.mimosahomes.com.au