



## BROMLEY 152

**\$595,000**

**Lot 3539 Gumtree Way  
Fraser Rise**

**3**  **2**  **1** 

### Mimosa Homes Proudly Presents

The Bromley 152 House and Land Package!

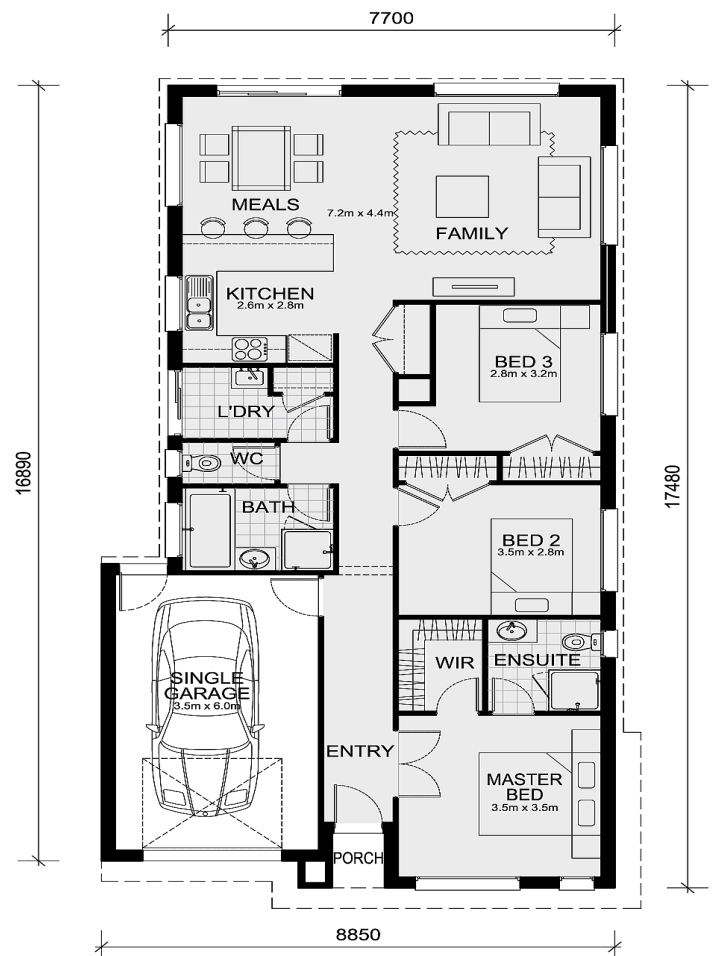
\* Experience The Mimosa Homes Difference!

\* Mimosa Homes Added Value Inclusions:

- Inclusive of site costs & connections with H1 class slab as per standard inclusions!
- Range of facades including feature render!
- Quality floor coverings throughout entire home!
- Higher ceilings 2550mm!
- Downlights to living areas!
- Stone bench top to kitchen!
- 600mm S/S upright oven and cook top with slide-out rangehood!
- Stainless steel Dishwasher and Microwave with trim kit!
- Overhead cupboards & wine rack! (Design specific)
- Remote control panel sectional lift garage door!
- 6 star energy with solar hot water!
- Flexible floor plans & so much more!
- Driveway!

**CALL BUILDER DIRECT!**

All plans and facades are indicative concepts only and are not intended to be accurate depictions.



#### Area Details

|           |        |               |        |
|-----------|--------|---------------|--------|
| Land Size | 294sqm | Building Size | 141sqm |
|-----------|--------|---------------|--------|

**Contact: Maretta Paila**  
[maretta@mimosahomes.com.au](mailto:maretta@mimosahomes.com.au)

0407 452 452  
[www.mimosahomes.com.au](http://www.mimosahomes.com.au)

**Disclaimer:** Land availability and pricing is subject to the development availability. Mimosa Homes reserves the right to amend specifications and price without notice. All plans and facades are indicative concepts only, and are not intended to be accurate depictions of the building, fencing, paths, driveways or landscaping and are not necessarily to scale all dimensions are approximate (refer to working drawings). Package prices are based on standard facades and standard inclusions.