

# House and Land



Package Price:

**\$703,701\***

**Lloyd 23 Cove**

Aspire

Lot 3538 Gumtree Way, Fraser Rise



350m2



23sq



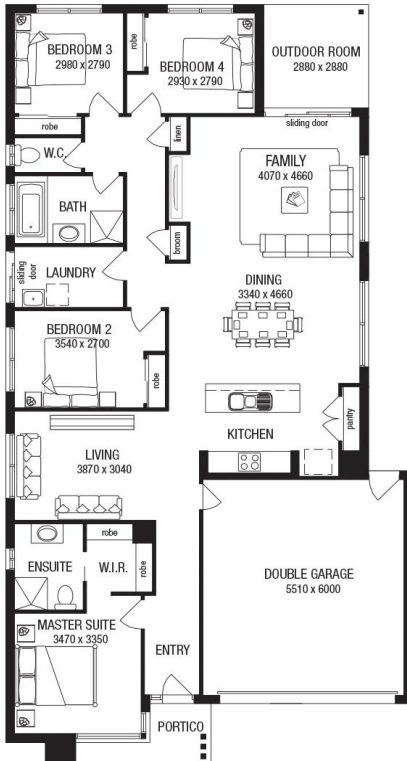
4



2



2



**Package includes:**

- Fixed site costs
- Stylish facade as shown
- 900mm stainless steel appliances
- 20mm stone benchtops to Kitchen
- Gas ducted heating
- Stylish laminate flooring to entry, kitchen, family and dining^
- Remote control garage
- Fibre optic package
- Brick infill – above garage opening
- Council and developer guidelines
- BAL 12.5 requirements

To find out more, contact Anu Agnihotri on 0478 180 332.



131 828  
abchomes.com.au

Easy as



**AUSTRALIAN  
BUILDINGCO.**

Floorplan and standard specification shown. Floorplan may not reflect developer guidelines. Total squares and building size of the home is calculated by measuring from the external side of external walls. Where no external wall exists for the purpose of measuring building area (such as porticos, balconies or outdoor rooms), Australian Building Company assumes a straight line between the exterior of walls or columns. Façade image may feature some upgrade items above standard specification such as feature render and bricks, feature timber cladding, feature tiling, front entrance timber decking, timber windows, timber garage door, front entry door, brick infills above garage, stain finished and driveway. Image may contain items not supplied by Australian Building Company, namely landscaping, planter boxes, fencing and paths. Australian Building Company reserves the right to alter the images or descriptions without notice. Price is correct as at the time of publication and is subject to land availability and may change as a result of variations in the inclusions or specifications selected by the purchaser or due to other circumstances that may affect the price as set out in the building contract, or changes in local, state or federal government laws. House design is subject to developer approval. For more information and details of standard inclusions and/or terms and conditions, speak with a Sales Consultant or visit [www.abchomes.com.au/vic/terms-and-conditions](http://www.abchomes.com.au/vic/terms-and-conditions) . VIC Builders License CDB-U 52968