



House & Land Package

From **\$760,931** *

Nova 190

4 | 2 | 2

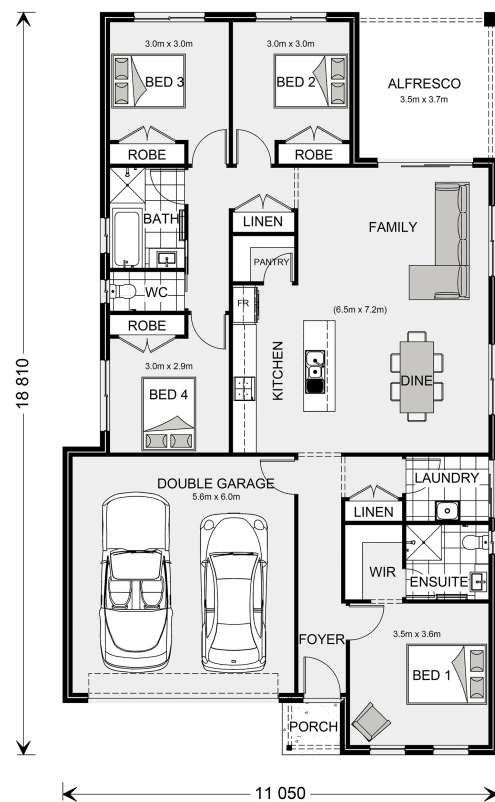
3513 Remembrance Circuit, Fraser Rise

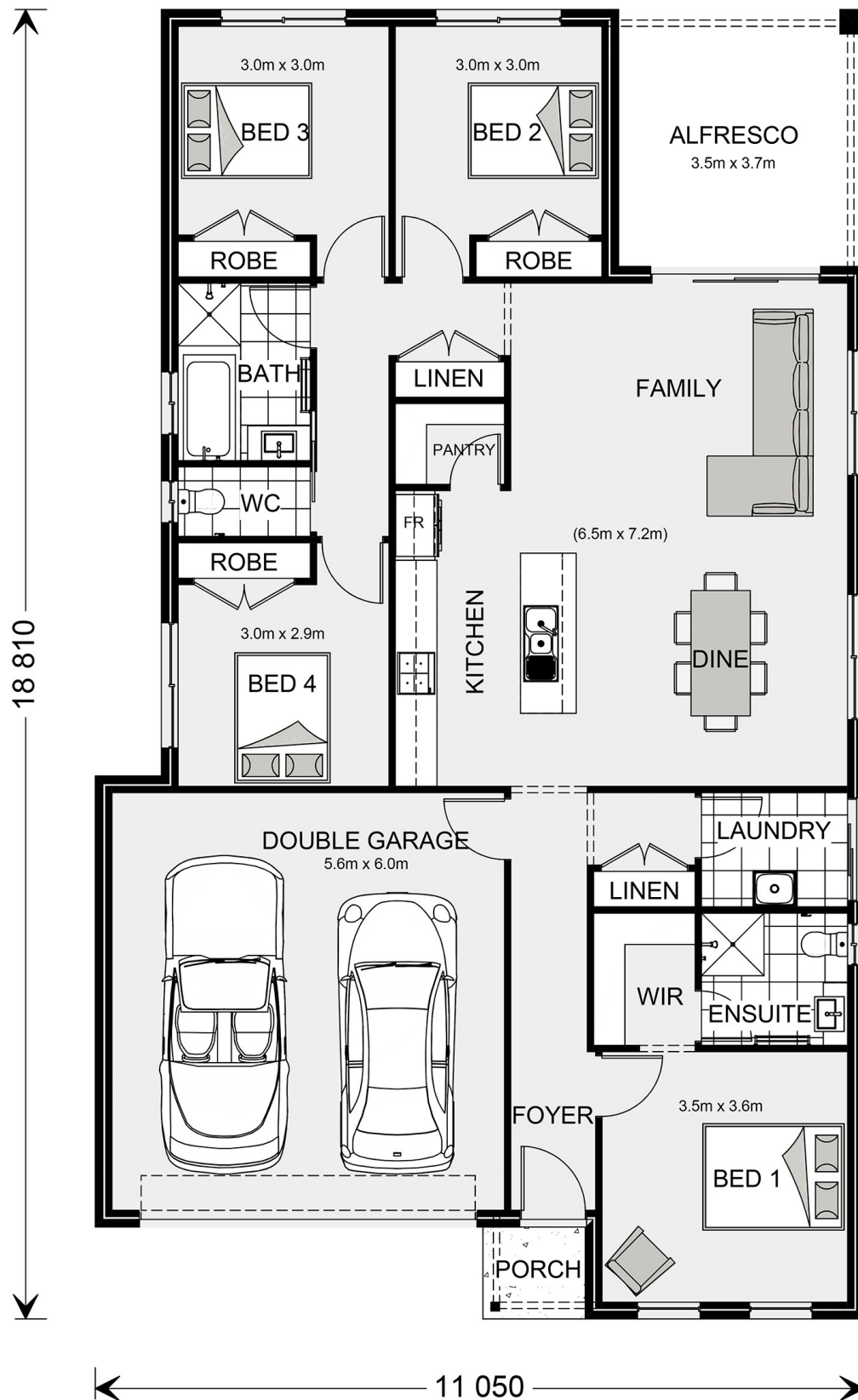
Land Area: 400 m²

Contact **Sophia Demertzis** on **0451 795 096**

Inclusions:

- + Upgraded Hamptons Facade
- + Select Level Inclusions - A world of choice!
- + High Quality Floor Coverings
- + Heating, Cooling & Upgraded Electrical Package
- + Water Tank & Coloured Concrete Driveway
- + *Site Costs To M Class Slab





* Package price is based on Nova 190 standard floor plan and standard façade (may be smaller than façade shown). Package may be subject to developer's design review panel, council final approval and G.J. Gardner Homes procedure of purchase. Package price excludes stamp duty on land, legal fees and conveyancing costs (including 6 Legal/74189757_2 transfer of title and searches). Prices are current as of the date of printing and are inclusive of GST. Prices may change without notice. Packages are subject to availability. Package subject to two separate contracts relating to the building and the land respectively. Photographs may depict fixtures, finishes and features not supplied by G.J. Gardner Homes. Excluded items may include but are not limited to landscaping items such as planter boxes, retaining walls, water features, pergolas, screens, driveways and decorative items such as fencing and outdoor kitchens or barbecues. Photographs may also depict inclusions not forming part of the standard design and which may be subject to additional costs. This design and illustration remains the property of G.J. Gardner Homes and may not be reproduced in whole or in part without written consent. For detailed home pricing, please talk to a New Homes Consultant or visit our website at <https://www.gjgardner.com.au/house-and-land-pricing>. Melbourne North West trading as G.J. Gardner Homes 1/997 Western Highway. Builders License CDB-U 61942.