



Capital 1223 Trenton 12.5m Facade

LOT 1416 LEAF STREET , TRILLIUM , MICKLEHAM

HOME SIZE - 23sqs

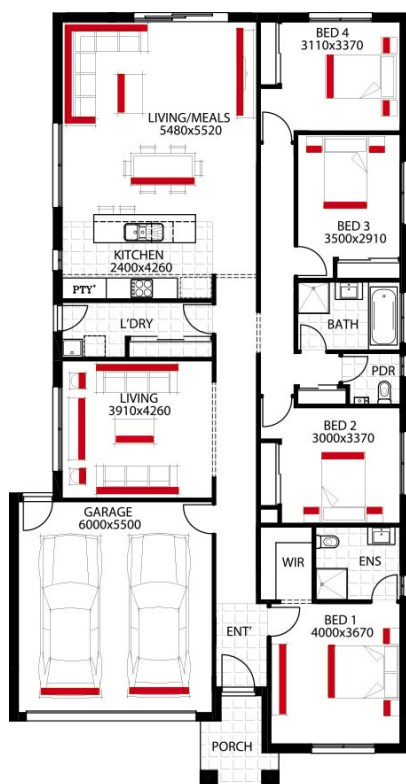
LAND SIZE - 389m2

PACKAGE PRICE

Capital 1223



\$704,529



Your Home Inclusions

- ✓ Fixed site costs
- ✓ Floor coverings throughout
- ✓ 2590mm high ceilings
- ✓ 20mm stone to kitchen
- ✓ 900mm European appliances
- ✓ Tiled shower bases
- ✓ Vinyl sliding robes to bedrooms
- ✓ Coloured concrete driveway
- ✓ 25 year structural warranty
- ✓ Developer Guidelines & Covenants (if required)

0479 035 647 | Tanayah Blackhall | Tanayah.blackhall@harmachomes.com.au | harmachomes.com.au

Image may include upgrade items and may depict fixtures, finishes and features not supplied by Harmac Homes such as landscaping and fencing. Accordingly, any prices in this flyer do not include the supply of any of those items. *Home and Land Package price correct at time of printing and subject to change without notice. Package price excludes external lighting, telephone service, stamp duty on land, legal fees and conveyancing costs including titles and property report. Floorplan is representation of facade depicted unless otherwise stated. Harmac Homes reserves the right to alter the images or descriptions without notice. See your Harmac Homes sales consultant for full details of standard inclusions. Land supplied by developer. Land prices and availability are subject to change without notice. All home & land packages are subject to developer approval. Fast Tracked packages include strict terms and conditions, refer to harmachomes.com.au for details. Building licence: CDB-U 58040 HAR21873.