

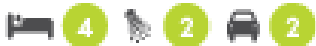


# Riviera 29

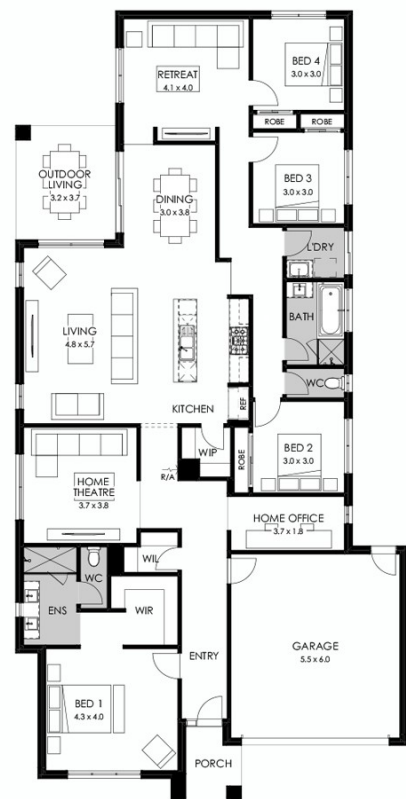
Price from **\$785,000**

1408 Leaf Street

Land size: 448m2



- Stunning façade included
- Double glazing (including sliding doors)
- Quality floor coverings throughout
- 2550mm high ceilings to ground floor
- LED downlights to entry, kitchen and living
- Soft closers to all drawers and doors
- ILVE 900mm wide oven, cooktop and rangehood
- 40mm Caesarstone kitchen benchtops
- 20mm Caesarstone to bathroom benchtops
- Quality Caroma basins and tapware
- Overhead cupboards adjacent to rangehood
- FREE BUTLERS PANTRY
- 25 Year Structural Guarantee
- 12 Month Maintenance



Call Christopher Irving—0435036680  
Or email [cirving@boutiquehomes.com.au](mailto:cirving@boutiquehomes.com.au)  
[boutiquehomes.com.au](http://boutiquehomes.com.au)

**boutique**  
homes

Image used is an artist impression for illustrative purposes only and may show decorative items not included in the price. Further terms and conditions apply to this offer including with respect to the price, for the full terms and conditions please visit <http://www.boutiquehomes.com.au/disclaimer>.