



**VENTURE  
UPGRADES**

*Plus*  
FLOORING INCLUDED

# HOME AND LAND

Images shown are for illustrative purposes only and may not represent the final product such as lighting, window furnishings, timber look garage door & timber windows. Façade details including entry door and window sizing may vary between house types. Pricing also excludes features such as fencing, landscaping, letterbox, decking, driveway and any notable features of the façade. Please speak with your sales consultant for further details.

LOT 1414, TRILLIUM ESTATE, MICKLEHAM (393M2)

**FLOOR PLAN: LINCOLN 23\_216**  
**FACADE: SAGAMORE**

**FROM\***  
**\$677,200**

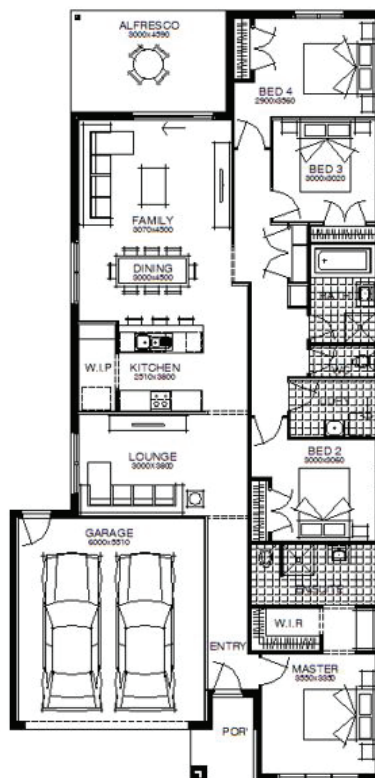
FIRST HOME OWNERS PRICE \$667,200

4 🚗 2 🍃 2 🚗 2 🚗 23sq 📏



## PACKAGE INCLUSIONS:

- ▼ DEVELOPER & COUNCIL REQs
- ▼ FLOORING THROUGHOUT
- ▼ 20MM CAESARSTONE BENCHTOP TO KITCHEN
- ▼ OVERHEAD CUPBOARDS TO KITCHEN
- ▼ 20 LED DOWNLIGHTS
- ▼ BRICKWORK OVER WINDOWS
- ▼ 900MM APPLIANCES
- ▼ DISHWASHER
- ▼ 2590 CEILING HEIGHTS
- ▼ REMOTE TO GARAGE DOOR



**For enquiries please contact:**

Michael Fitzgerald  
0418101286  
[Simonds.com.au](mailto:Simonds.com.au)

Metro North

VIC  
[michael.fitzgerald@simonds.com.au](mailto:michael.fitzgerald@simonds.com.au)