

**FIXED PRICE  
HOUSE & LAND**

## HOUSE & LAND

 Trillium Estate

**\$644,534**

House Name: Somers

Facade: Creswick

Lot Address: Lot 1411 Ontario Parade, Mickleham

Land Size: 278 m<sup>2</sup>

House Size: 21.46 sq



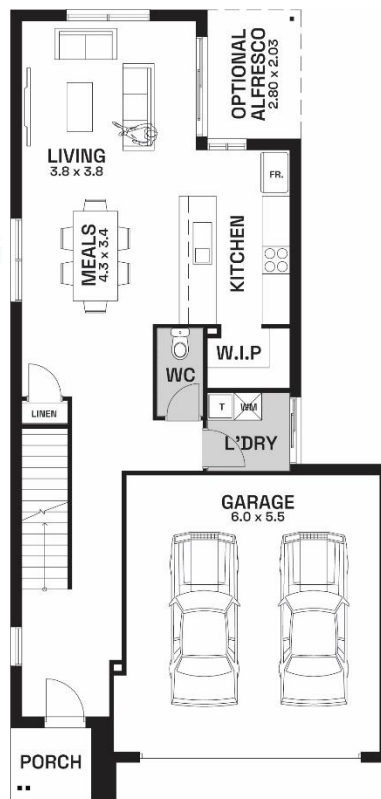
4 3 2

### Standard Inclusions

- 4 spacious bedrooms
- Double car garage
- Stunning façade included
- Professionally designed colour schemes on offer!
- Panel lift Colorbond garage door
- Keyed locks to all windows
- And much more

### Turn-Key Inclusions

- Carpets and tiles throughout
- Stainless steel appliances including dishwasher
- Blinds to all openable windows and sliding doors
- Flyscreens to all openable windows
- Coloured concrete driveway
- Natural concrete path on sides of home
- Letterbox
- Clothesline
- Council requirements incl. OH&S
- Fixed site costs including rock removal
- Full landscaping front and rear
- 



Total package price takes into account Land Price - \$341,000  
Build Price - \$303,534

The facade image provided is for illustrative purposes only.  
The picture illustrated may show the driveway/garage to the opposite side of the actual floorplan.

**For more information, please contact Chris 0477 077 591**