

## Duneed 22

### HOUSE & LAND PACKAGE

 | 3  | 2  | 2

Address **Lot No 113 Hemley Circuit,  
Maiden Gully - Westbury Estate  
Lot Size 608m2**

Price **\$417,916.00**

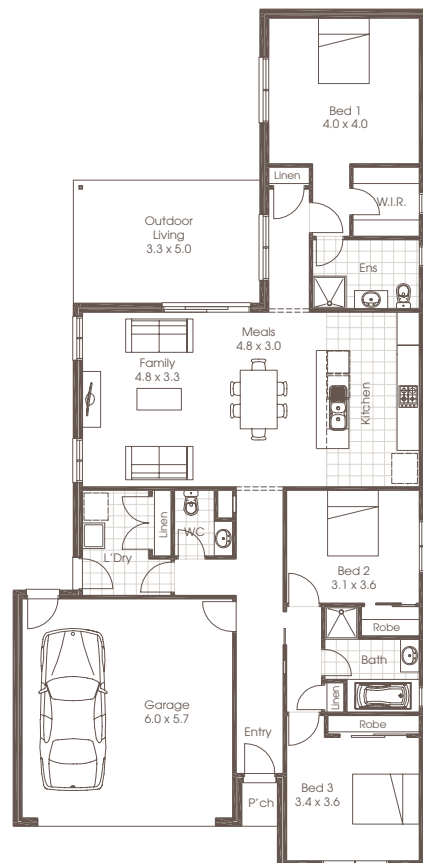
#### INCLUDED:

- Aspire Inclusions with Traditional Facade
- Colorbond Roof
- Site Cost Allowance including BAL
- 3 Coat Paint System
- Westinghouse Appliances
- Panel Lift garage door with Motor and 2no Remotes
- Floor Coverings Throughout
- Flyscreens to all openable Windows and Sliding Doors
- Reverse Cycle split system
- Evacuated tube solar hot water system
- NBN Conduit
- Heat lamp/light/fan to Bathroom & Ensuite
- Termite Protection
- Plus much more.....

For Further Information

**Cavalier Homes Bendigo**

Travis Breheny 0439 032 022



Each office is independently owned and operated. Room sizes shown are approximate only, please refer to final working drawings for actual sizes. Plans are protected by copyright. Prices, inclusions and plans are subject to variation without notice. Display/show home designs and inclusions vary throughout Australia and New Zealand and are provided as a guide only. Please refer to your building contract for the specific design and inclusion details of your new home. \*Conditions Apply. Contact us for all information regarding the inclusions. Site allowances subject to soil reports & Engineering report. This information sheet is a guide only.

Cavalier Homes Registered Builders in Albury-Wodonga CDB-U 48509 (VIC) 184744C (NSW), Bendigo CDB-U 50034, Greater Western Sydney 332118C, Goulburn Valley CDB-U 51879 (VIC) 316535C (NSW), Goldfields CDB-U 58723, Melbourne West CDB-M 49760, North Coast 209455C, Wagga Wagga 196616C.