

SIMONDS
BUILDING HOMES SINCE 1949



HOME AND LAND

Images shown are for illustrative purposes only and may not represent the final product such as lighting, window furnishings, timber look garage door & timber windows. Facade details including entry door and window sizing may vary between house types. Pricing also excludes features such as fencing, landscaping, letterbox, decking, driveway and any notable features of the facade. Please speak with your sales consultant for further details.

LOT 2089, CITRON CRESCENT, HELENSVALE (326M2)

FLOOR PLAN: MURNANE 32_303
FACADE: MACINDOR

FIXED PRICE

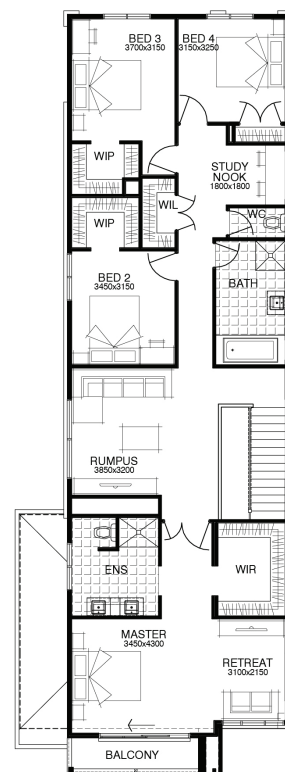
\$689,914

4 🚗 2 🍷 2 🚗 2 🚗 33sq 📏



PACKAGE INCLUSIONS:

- ▼ Fixed Site Costs
- ▼ Developer and Council Requirements
- ▼ Lifetime Structural Guarantee**
- ▼ Laminate flooring to Entry, Kitchen and Living
- ▼ Carpet to remainder of home including Stairs
- ▼ 900mm Appliances
- ▼ 20mm Caesarstone Benchtop to Kitchen
- ▼ Overhead Cupboards to Kitchen
- ▼ 20 Downlights
- ▼ Exposed Aggregate Driveway 40m2
- ▼ Concrete to Porch and Alfresco



For enquiries please contact:
Sebastien Da Lozzo
0481881068
Simonds.com.au

QLD
LOGANHOLME QLD 4129
sebastien.dalozzo@simonds.com.au



All Fixed Price Home and Land packages are subject to Developer and Council approval and is based on Simonds standard floor plan with preferred siting (without alterations). Package Price does not include stamp duty, government, legal or bank charges. Community Infrastructure Levy and Asset Protection Permit are not included in pricing and is to be arranged by the client directly with the Developer (if applicable). Any alterations may incur additional charges. Confirm land price and availability prior to purchase. Simonds reserves the right to withdraw or amend pricing, inclusions and promotion at any time without notice. This package applies to QLD Simonds Home Range only. *Flyscreens and keyed locks to all standard openable windows. **Please refer to the terms and conditions for the Lifetime Structural Guarantee at www.simonds.com.au/terms-and-conditions. Please speak with your sales consultant for further details. Pricing is current at 28/02/2020.