

SIMONDS
BUILDING HOMES SINCE 1949



**FIXED
GUARANTEE
PRICE**

**CAESARSTONE*
UPGRADE
BENCHTOPS**

Embark
UPGRADES
— Plus —
FLOORING INCLUDED

HOME AND LAND

Images shown are for illustrative purposes only and may not represent the final product such as lighting, window furnishings, timber look garage door & timber windows. Façade details including entry door and window sizing may vary between house types. Pricing also excludes features such as fencing, landscaping, letterbox, decking, driveway and any notable features of the façade. Please speak with your sales consultant for further details.

LOT 2089, CITRON CRESCENT, HELENSVALE (326M2)

FLOOR PLAN: GARNER 25_238
FACADE: MACINDOR

FIXED PRICE

\$650,563

4 🚗 2 🍷 2 🚗 2 🚗 26sq 📏

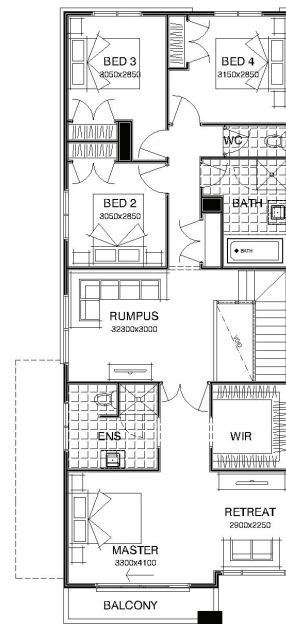
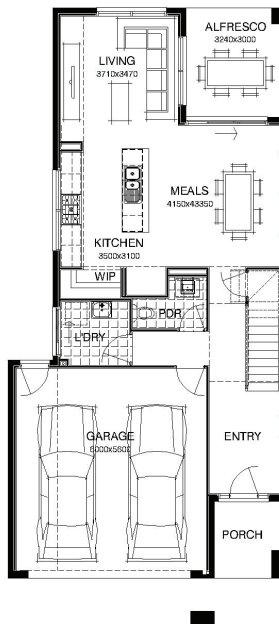
Journey

— into style —

Embark | Expand | Attain

PACKAGE INCLUSIONS:

- ▼ Fixed Site Costs
- ▼ Developer and Council Requirements
- ▼ Lifetime Structural Guarantee**
- ▼ Laminate flooring to Entry, Kitchen and Living
- ▼ Carpet to remainder of home including Stairs
- ▼ 900mm Appliances
- ▼ 20mm Caesarstone Benchtop to Kitchen
- ▼ Overhead Cupboards to Kitchen
- ▼ 20 Downlights
- ▼ Exposed Aggregate Driveway 40m2
- ▼ Concrete to Porch and Alfresco



For enquiries please contact:

Chris Littlewood
0411 611 842
Simonds.com.au

QLD

LOGANHOLME QLD 4129
chris.littlewood@simonds.com.au

The
SURROUNDS
by Villavard

All Home and Land packages are subject to Developer and Council approval and is based on Simonds standard floor plan with preferred siting (without alterations). Package Price does not include stamp duty, government, legal or bank charges. Community Infrastructure Levy and Asset Protection Permit are not included in pricing and is to be arranged by the client directly with the Developer (if applicable). Any alterations may incur additional charges. Confirm land price and availability prior to purchase. Simonds reserves the right to withdraw or amend pricing, inclusions and promotion at any time without notice. This package applies to QLD Simonds Home Range only. **Please refer to the terms and conditions for the Lifetime Structural Guarantee at www.simonds.com.au/terms-and-conditions. Please speak with your sales consultant for further details. Pricing is current at 18/04/2020.