

## House & Land

Baltimore 239Q - Modern

# \$1,016,561\*



Home Size: 239.56m<sup>2</sup> | Lot Size: 294m<sup>2</sup> | 10.5m x 28m Lot

4 2 3 2

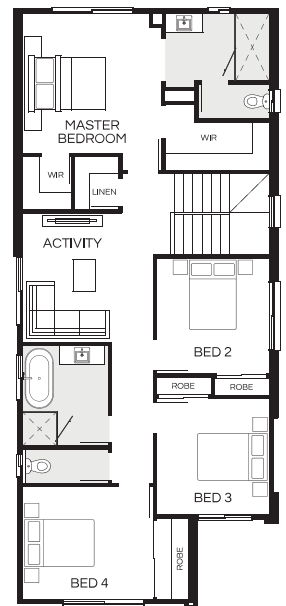
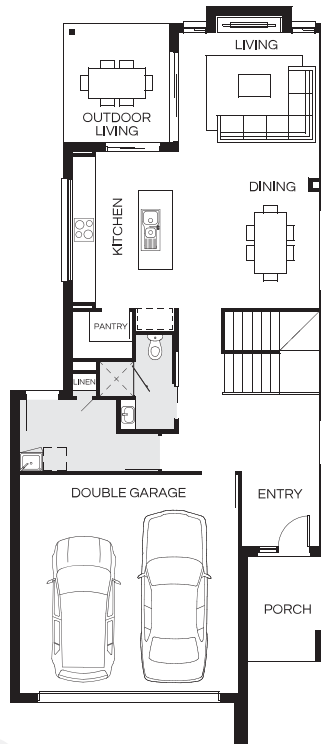


Facade image may depict features such as landscaping, furniture, window treatments, lighting and colours which are not included in the package price or which are not available from Coral Homes.

Lot 4 Buckler Drive, Helensvale | The Surrounds Estate

### House & Land Package Inclusions

- ✓ Designer Solutions (Option 1) price reduction included in this price\*
- ✓ Fixed price site costs
- ✓ Caesarstone benchtops to kitchen, bathroom and ensuite
- ✓ 900mm kitchen appliances
- ✓ Quality bathroom tapware, baths and frameless mirrors
- ✓ Semi-frameless shower screen to bathroom and ensuite
- ✓ Stained timber feature front entry door
- ✓ Steel frame and Steel Roof
- ✓ 2550mm High Ceilings to Ground Floor
- ✓ Carpet and Tiling
- ✓ Ducted Air conditioning
- ✓ Exposed aggregate driveway
- ✓ 70m<sup>2</sup> turf to home
- ✓ Clothesline & Letterbox



**Glenn Smith**

0409 038 267

g.smith@coralhomes.com.au

# CORAL HOMES

\*Pricing shown is inclusive of Designer Inclusions offer "Designer Solutions" when selecting Option 1 (Price Reduction). Please refer to full terms and conditions <https://coralhomes.com.au/terms-conditions/>. Floorplan is indicative only, conceptual in nature and subject to change. Floorplan may depict fixtures, fittings, features, finishes, inclusions, furnishings, vehicles and/or other products which are not included in the house design, not included in the package price and/or not available from Coral Homes. \*Price shown is based on Coral homes Brisbane, Gold Coast, Sunshine Coast region price list dated 03-06-2024. Land price at the time of printing is Land price at the time of printing is \$529,900. Price shown does not include stamp duty, registration fees, additional amounts payable in respect of variations to the house design requested by the buyer or any other incidental fees associated with the acquisition of the land and home. Plan is subject to approval by the Principal Developer and Local Authorities. Additional costs may apply for bushfire, acoustics, N3, easements or additional covenant requirements and retaining walls. Coral Homes reserves the right to withdraw this package at any time, prior to entry into a contract, without notice. QBCC 50792/1014053, OFT NSW 62084C, BLD260339.