

RATHDOWNE TOWNHOMES

URBAN PLACE
COLLECTION 4.0

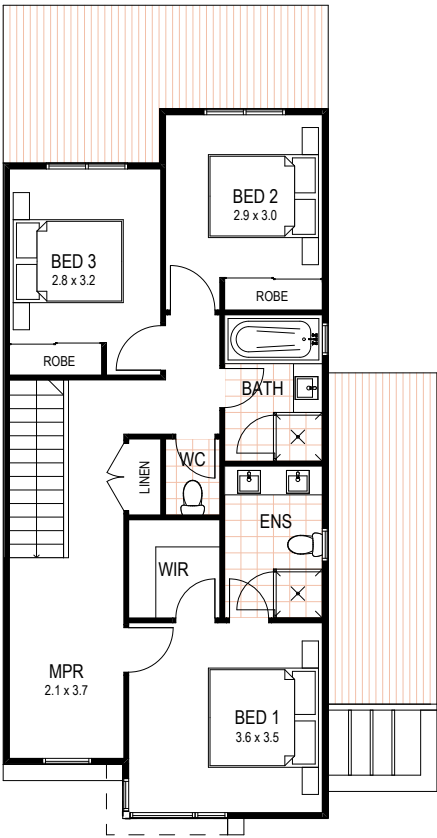
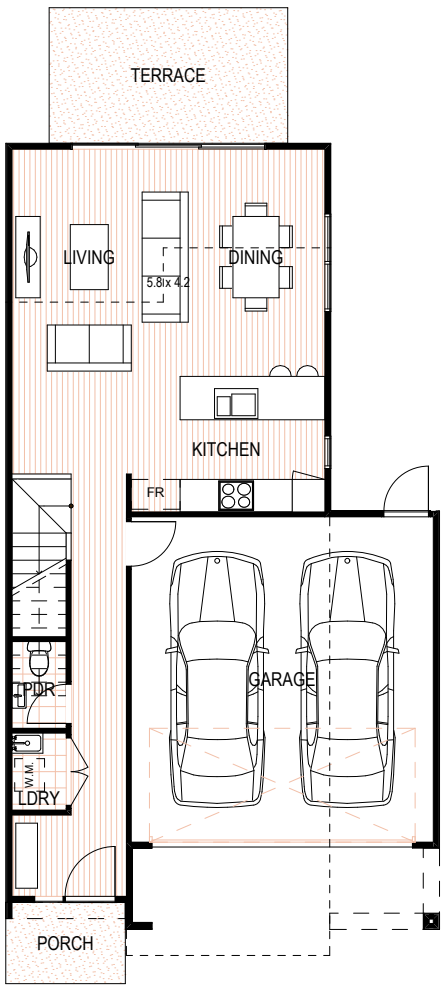


SHAPE
homes



IRONBARK

3 2 2



IRONBARK		
Ground Floor	57.79m ²	6.22sq
First Floor	70.10m ²	7.55sq
Garage	34.96m ²	3.76sq
TOTAL AREA	162.85m²	17.53sq

All images and drawings are illustrative only and may not be to scale. Floor plans are subject to change to comply with authority approval. Illustrations and information are intended to be indicative only and are believed to be correct at the time of publication. Shape Homes reserves the right to withdraw or alter at any time.



NORTH

