

# RATHDOWNE TOWNHOMES

URBAN PLACE  
COLLECTION 4.0

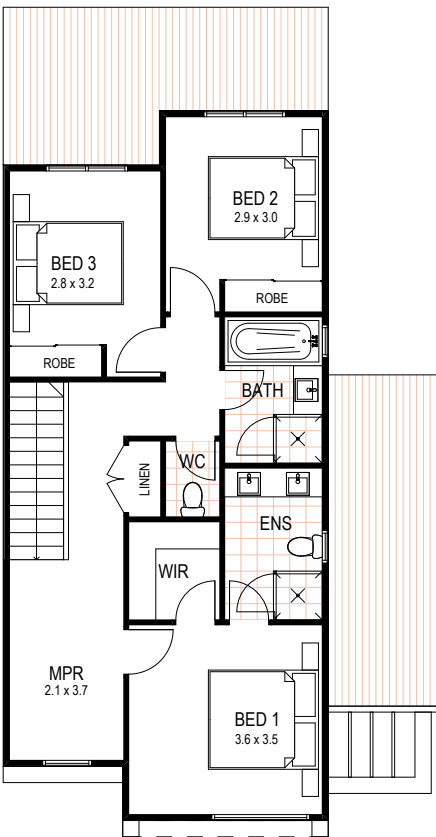
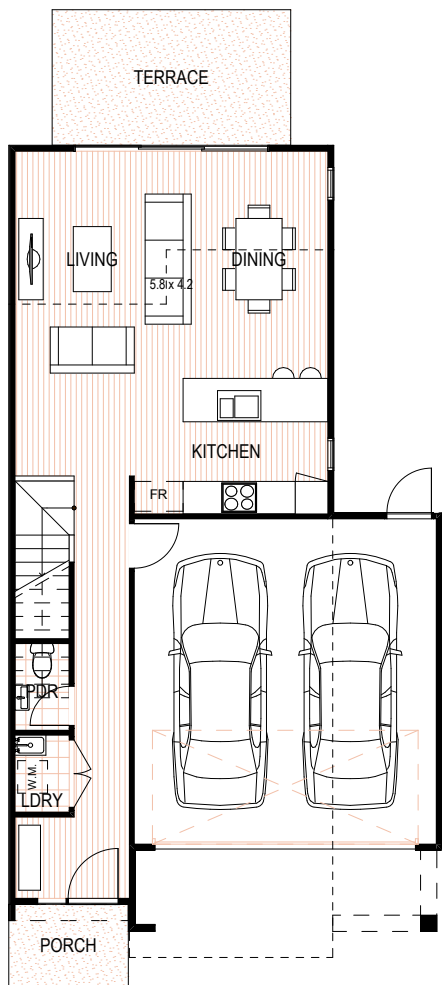


SHAPE  
homes



# IRONBARK END

3 2 2



IRONBARK END		
Ground Floor	57.79m <sup>2</sup>	6.22sq
First Floor	70.10m <sup>2</sup>	7.55sq
Garage	34.92m <sup>2</sup>	3.76sq
<b>TOTAL AREA</b>	<b>162.81m<sup>2</sup></b>	<b>17.52sq</b>

All images and drawings are illustrative only and may not be to scale. Floor plans are subject to change to comply with authority approval. Illustrations and information are intended to be indicative only and are believed to be correct at the time of publication. Shape Homes reserves the right to withdraw or alter at any time.

