

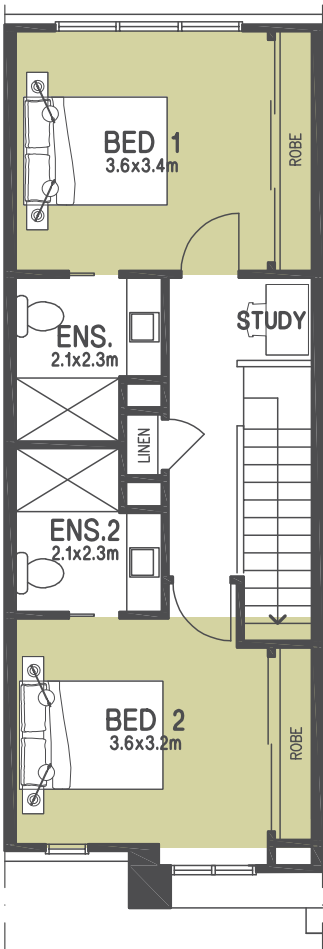
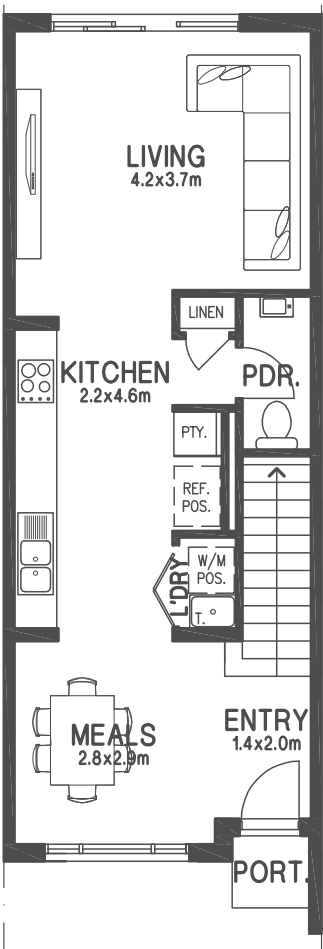
# BARMAH

LOTS 674-675

 2  2  1



A smart solution for contemporary living, the two-bedroom Barmah makes the most of the block. Great for entertainers, the ground floor is given over to spacious open-plan living. A designer kitchen at the heart of the home links distinct zones for dining and relaxing. Head upstairs and two large bedrooms, both with ensuite, sit at either end of the property, ensuring your privacy. A courtyard outback, perfect for summer, leads to a single garage.



Barmah plan shown based on lot 674.

BARMAH		
Ground Floor	53.79m <sup>2</sup>	5.79sq
First Floor	53.77m <sup>2</sup>	5.79sq
Garage	29.12m <sup>2</sup>	3.14sq
Porch	1.11m <sup>2</sup>	0.11sq
TOTAL AREA	137.79m <sup>2</sup>	14.83sq

