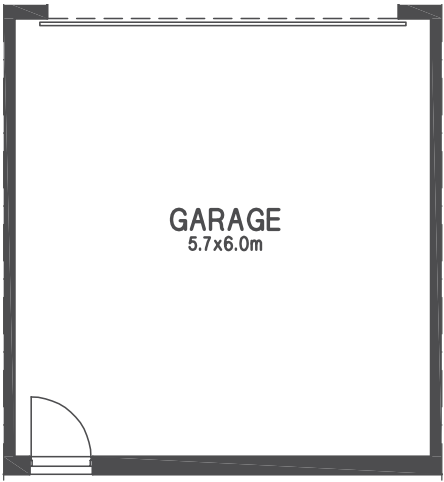


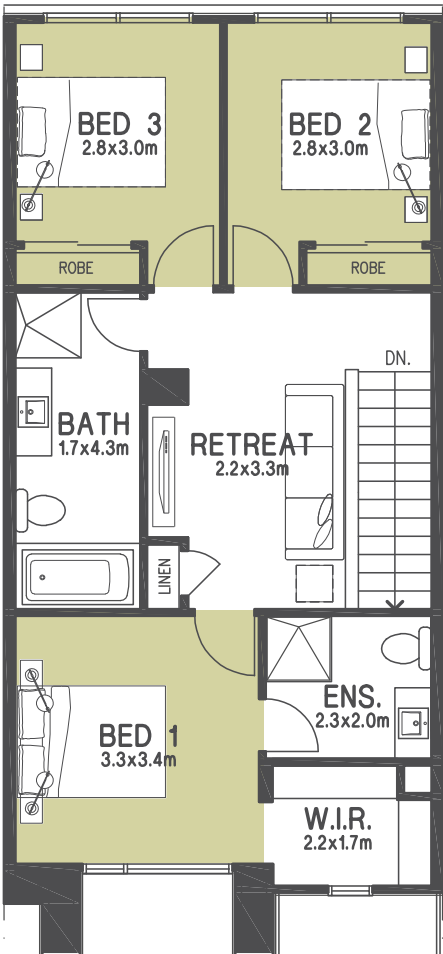
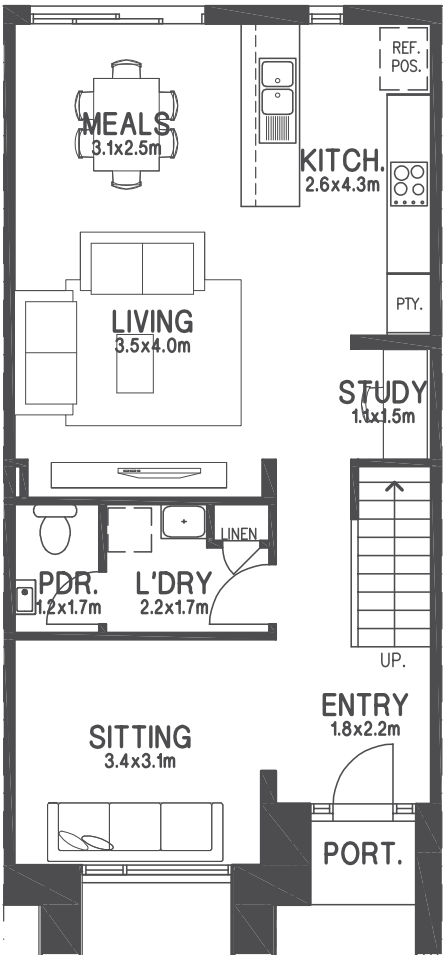
# ROSEDALE 3

LOTS 676-677

 3  3  2



The stylish three bedroom Rosedale offers an innovative, functional design that will delight the whole family. With three spacious living areas and open plan kitchen to meals. It provides a unique combination of purpose and comfort, catering to today's family lifestyle.



Rosedale plan shown based on lot 676 & 677.

ROSEDALE 3		
Ground Floor	72.57m <sup>2</sup>	7.82sq
First Floor	72.34m <sup>2</sup>	7.79sq
Garage	38.82m <sup>2</sup>	4.19sq
Porch	1.65m <sup>2</sup>	0.17sq
TOTAL AREA	185.38m <sup>2</sup>	19.97sq

