



HOUSE & LAND

LOT 1203 VEARING ROAD,
WOLLERT (RATHDOWNE ESTATE)
TITLES Q4, 2022

From \$592,850

House name: NELSON 22

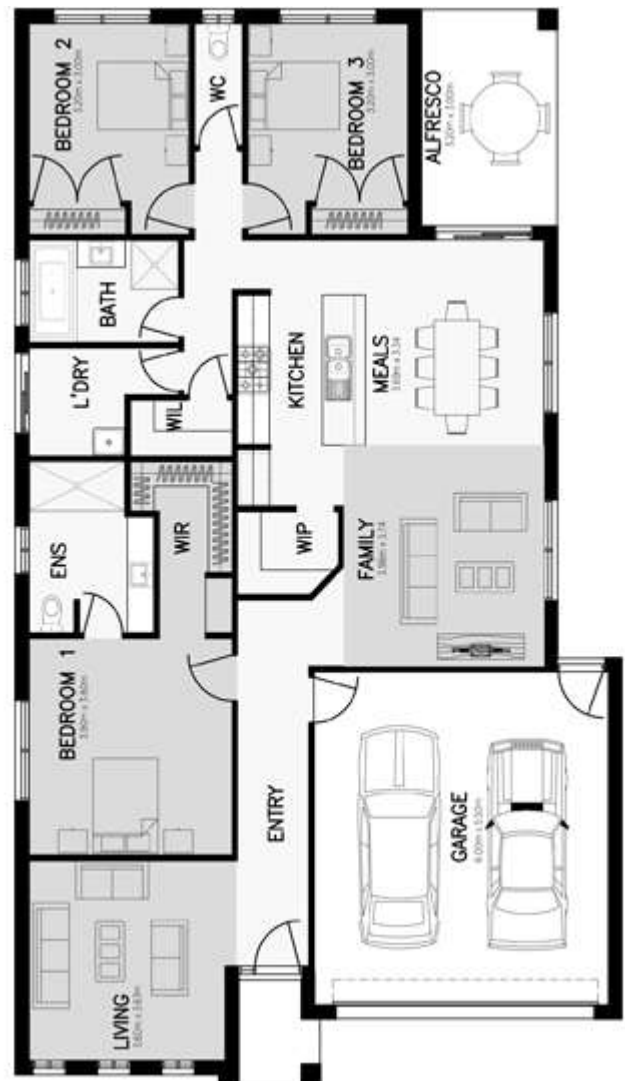
Lot Number: 1203

Lot Size: 351m²

4 2 2

House and Land Package includes:

- 4th Bedroom option ILO Living
- Timber or laminate to main areas
- Carpet throughout remainder of home
- 2590mm high ceilings to ground floor
- Brickwork to all windows and doors
- Smart LED Downlights to main areas
- 20mm stone bench to kitchen
- 20mm stone bathroom and ensuite
- 900mm European SMEG appliances
- 600mm European SMEG dishwasher
- Includes 'Be Our Guest Promo'
- Facade included
- TURNKEY (driveway/blinds/front landscape)



CALL 0417 912 015 OR EMAIL ilona@nostrahomes.com.au

YOU'LL BE SURPRISED BY WHAT WE CALL STANDARD

The information contained in this flyer is to be used as a guide only. The flyer was completed prior to the engineering and construction of the particular home therefore design, engineering, dimensions, fittings and specifications are subject to change and will be specified in the final purchase and/or construction contract. The flyer includes features not supplied by Nostra Homes including without limitation landscaping, concrete driveways, fencing, water features and furniture. This flyer does not constitute part of an offer or contract. Prospective purchasers should rely on their own enquiries, legal advice and the contract of sale. Please contact our office if you have any questions regarding the property.