



RISE UPGRADES
\$12,500*
Plus
FLOORING PACK 'A'



HOME AND LAND

Images shown are for illustrative purposes only and may not represent the final product such as lighting, window furnishings, timber look garage door & timber windows. Facade details including entry door and window sizing may vary between house types. Pricing also excludes features such as fencing, landscaping, letterbox, decking, driveway and any notable features of the facade. Please speak with your sales consultant for further details.

LOT 1905, RATHDOWNE ESTATE, WOLLERT (400M2)

FLOOR PLAN: GRAMERCY 22_205
FACADE: MORAN

FROM*
\$777,509

4 🚗 2 🍃 2 🚗 1 🚗 22sq 📏

RISE
UPGRADES

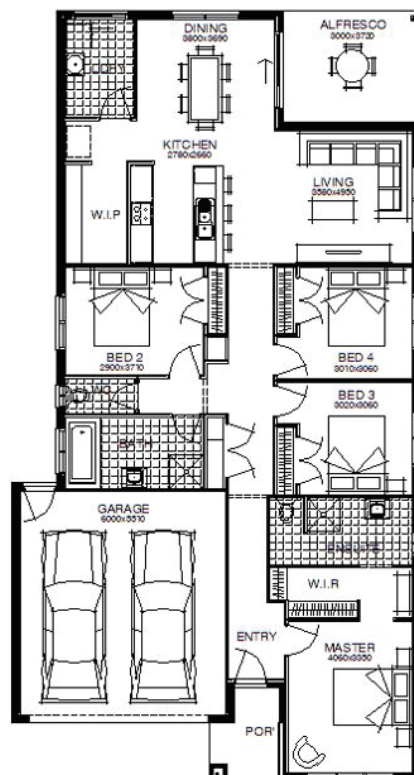
↑

**RISE ABOVE
THE REST**

GET UP TO
\$44,000*
WORTH OF INCLUSIONS
FOR JUST \$15,000*

PACKAGE INCLUSIONS:

- DEVELOPER & COUNCIL REQs
- FLOORING THROUGHOUT
- 20MM CAESARSTONE BENCHTOP TO KITCHEN
- OVERHEAD CUPBOARDS TO KITCHEN
- 20 LED DOWNLIGHTS
- BRICKWORK OVER WINDOWS
- 900MM APPLIANCES
- DISHWASHER
- TOWEL RAILS & TOILET ROLL HOLDERS
- REMOTE TO GARAGE DOOR



For enquiries please contact:
Michael Fitzgerald
0418101286
Simonds.com.au

Metro North
VIC
michael.fitzgerald@simonds.com.au

