

# House & Land Package

Lumina  
by ARDEN

ARDEN  
HOMES



## VERONA 34

GENEVA FAÇADE

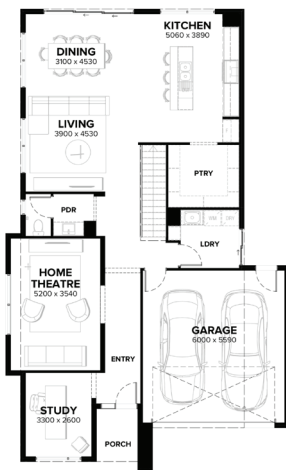
LOT 1520 (444 m2)

MERRYVALE DRIVE, RATHDOWNE, WOLLERT



HOUSE & LAND PACKAGE

**\$1,007,110\***



- All-electric home
- Haier ducted reverse-cycle heating and cooling
- Rendered Hebel home
- COLORBOND® steel roof and panel lift garage door with remote
- 5KW Solar PV system
- Double glazing to windows
- LED downlights
- Floor coverings throughout the home
- 2590mm high ceilings to ground floor
- Haier appliances
- 20mm Caesarstone benchtops to Kitchen

**CONTACT Sumit Sarup 0433 911 495**

[ardenhomes.com.au](https://ardenhomes.com.au)

RATHDOWNE  
WOLLERT

The advertised package price shown includes the \$40k discount. Arden Homes will provide a construction contract for the house and separately the owners will enter into a contract to purchase land directly from the landowner. This advertised offer is subject to availability, statutory approval and a successful settled land contract. Arden Homes reserves the right to change prices or inclusions advertised without notice. For more detailed home pricing, including details about the standard inclusions for the house, optional upgrades and variations, please talk to our consultants. Images shown in this brochure may depict upgraded fixtures, finishes and features including items not supplied by Arden Homes such as alfresco decking, internal and external fireplaces, window and house furnishings and landscaping. \*For details on the Save \$40k offer and 5% until completion offer, visit <https://ardenhomes.com.au/terms-and-conditions/>. CDB-U 48276 and no part may be reproduced or copied without written consent 12/3/2024