



Chiswick 27 | Contemporary Façade

Facade images and landscaping may vary from this image

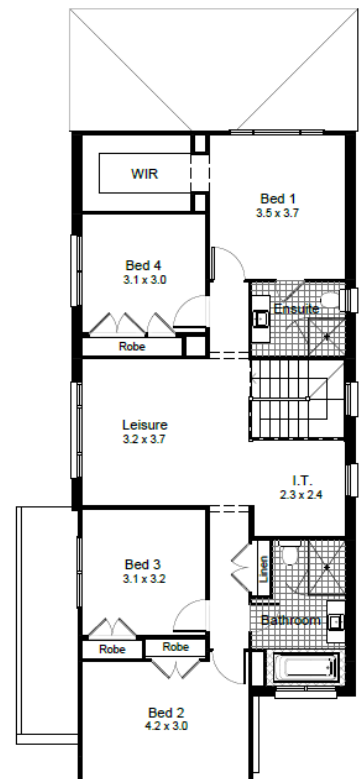
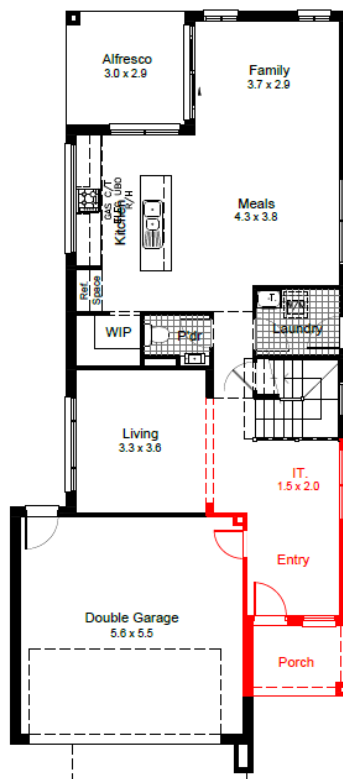
4 | 2.5 | 2

Lot 2 \$1,392,000

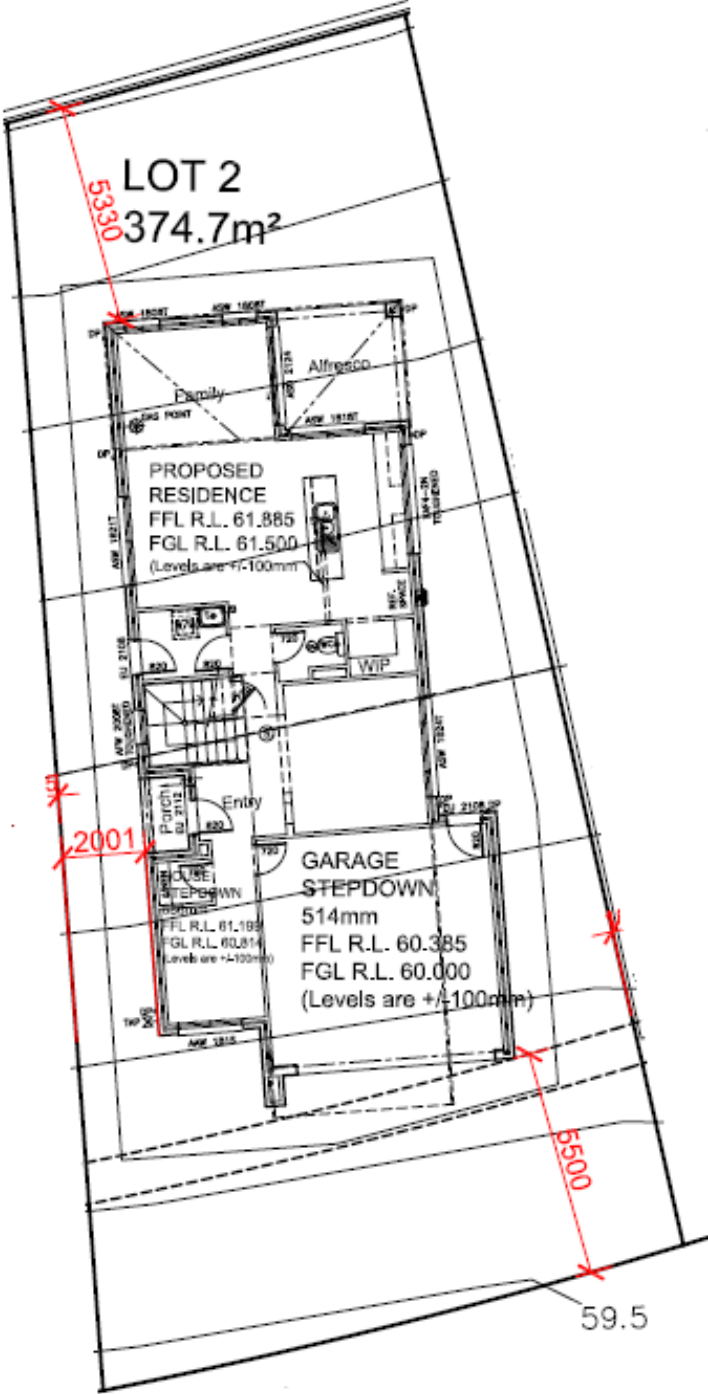
Includes Sapphire Inclusions and
Feel Free Promotion

PACKAGE INCLUDES

- Land Size - 374 SQM
- Driveways, Landscaping, Fencing
- Floor Coverings
- Fully Ducted Air
- 2750mm Ceiling Height to Ground Floor – subject to approval
- Smeg Appliances
- Roller blinds
- Colour Trims to Façade
- 40mm Stone Benchtops with waterfall edge to Kitchen
- Two 600 Wide Ovens
- Auto Garage Door
- Alarm System
- \$30,000 Discount Promotion Already Applied



This design will require steps within the home



House Length	19.22m	Total Area m ²	248.91
House Width	8.55m	Total Area Squares	27