



Boston 36 | Providence Facade

Facade images and landscaping may vary from this image

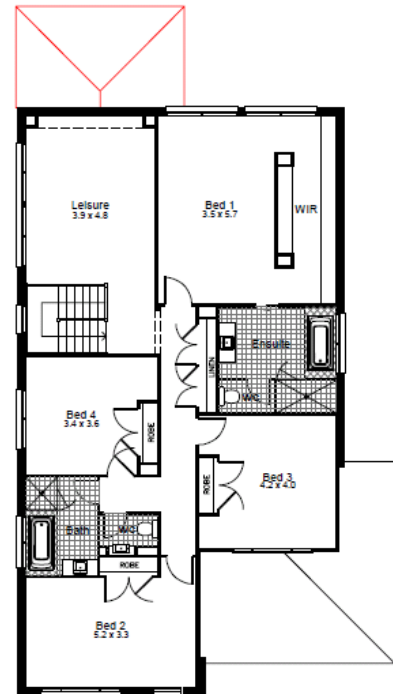
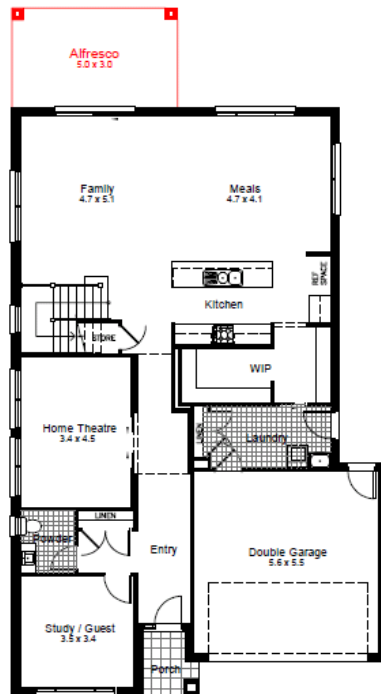
4 | 3 | 2 | Car

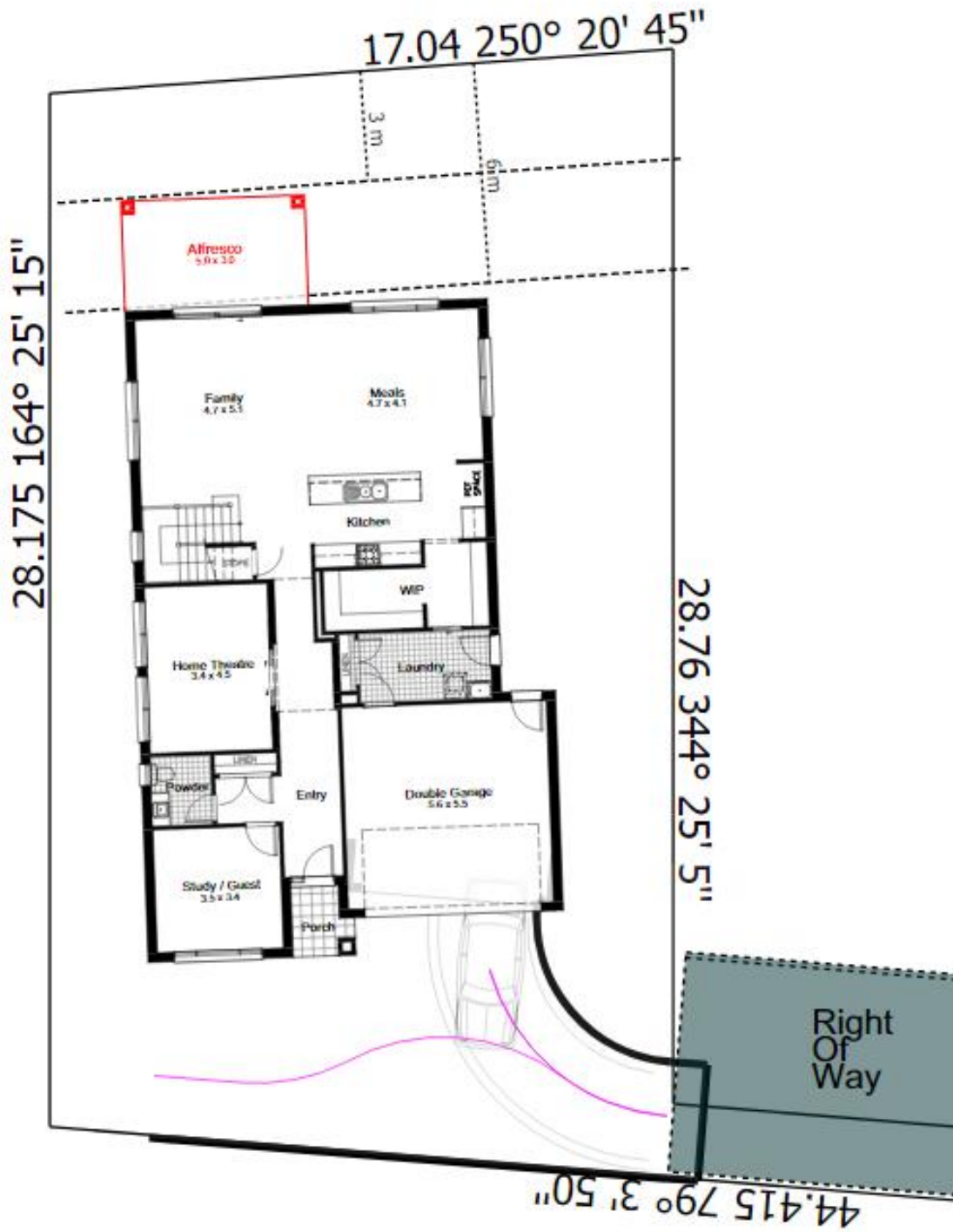
Lot 83 \$1,645,000

Includes Sapphire Inclusions and
Free Style Promotion

PACKAGE INCLUDES

- Land Size - 600 SQM
- Driveways, Landscaping, Fencing
- Floor Coverings
- Fully Ducted Air
- 2750mm Ceiling Height to Ground Floor
- Standard Alfresco Included
- Smeg Appliances
- Roller blinds
- Colour Trims to Façade
- 40mm Stone Benchtops with waterfall edge to Kitchen
- Two 600 Wide Ovens
- Auto Garage Door
- Alarm System
- \$30,000 Discount Promotion Already Applied





House Length	17.75m	Total Area m ²	336.16
House Width	11.35m	Total Area Squares	36