



**Ducted Air Included**

Lakewood 29 | Tempo Facade

Facade images and landscaping may vary from this image

4 | 3 | 2 | 1

**Lot 86 \$1,246,000**

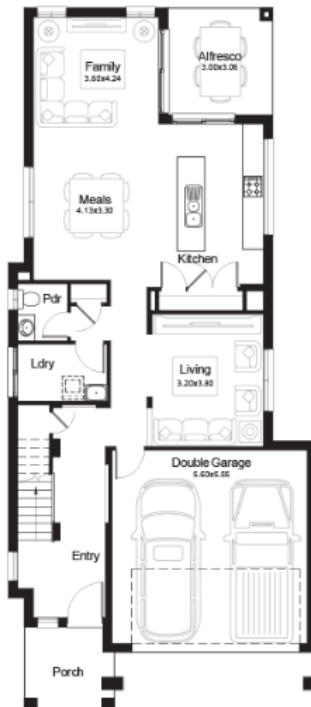
Estimated Land Registration 3<sup>rd</sup> Quarter 2022

Comfort, Kitchen and Electrical Security Packs Included. **Current Promotion included.** Land Size 340 SQM

This plan may include additional steps, please see a consultant.

## PACKAGE INCLUDES

- Quality Tiles & Carpet
- Blinds and Flyscreens to windows
- Insulation to walls and ceiling (excluding garage)
- 900mm Stainless Steel Oven, Cook top and Range hood. Stainless Steel Dishwasher
- 20mm stone bench top to kitchen with Soft close drawers and doors.
- Render to colour trims included
- Down lights to living Areas
- Automatic Garage Doors
- TV Antenna
- Driveway, Landscaping, Site Costs & Fencing





House Length	20.10m	Total Area m <sup>2</sup>	268.76
House Width	8.80m	Total Area Squares	29