



Barcelona 29 | Mantra Facade

Facade images and landscaping may vary from this image

4 | 1 | 3 | 2 | 1

**Lot 87 \$1,308,800**

Estimated Land Registration 3<sup>rd</sup> Quarter 2022

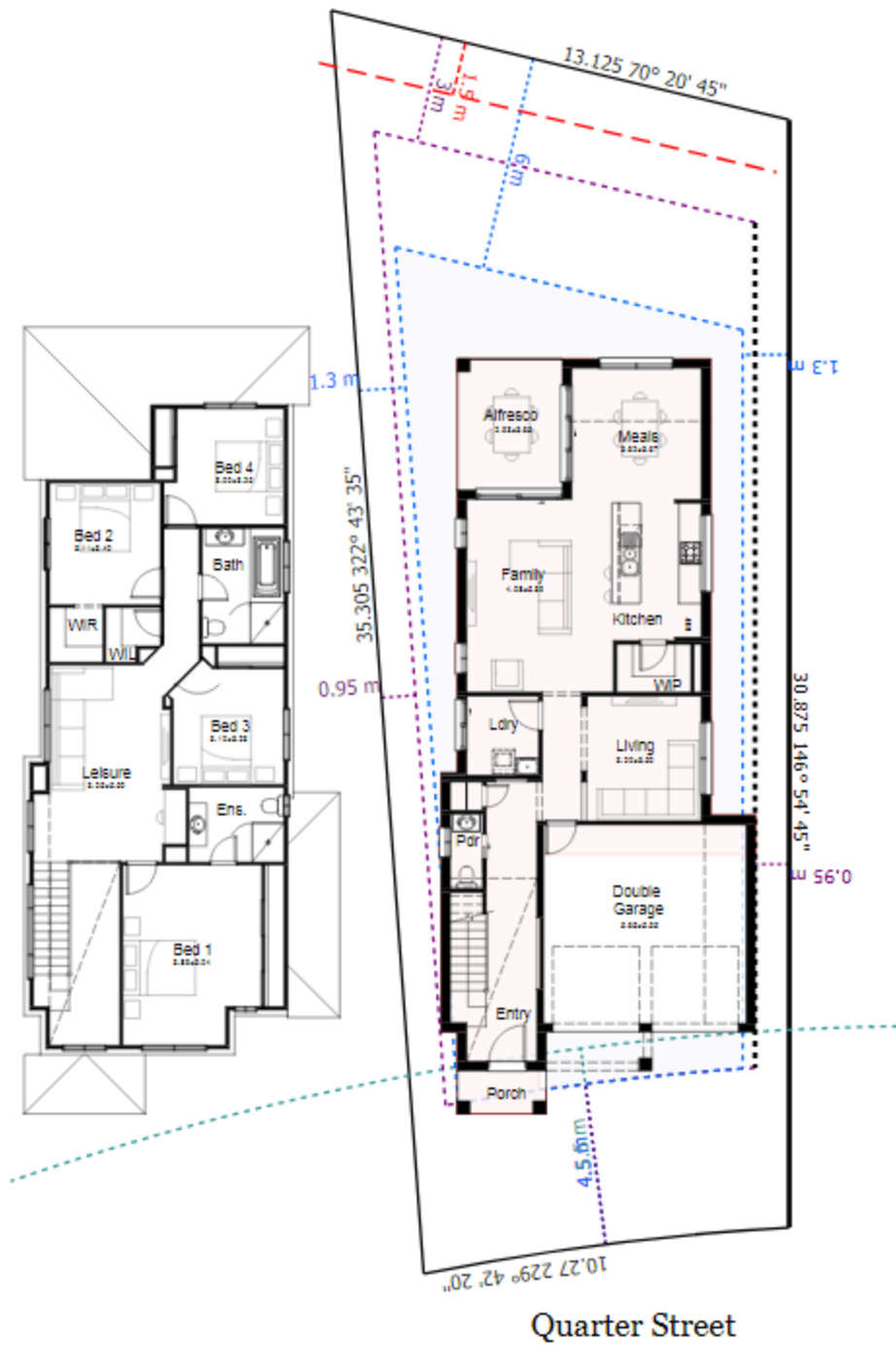
Comfort, Kitchen and Electrical Security Packs Included. **Current Promotion included.** Land Size 376 SQM

This plan may include additional steps, please see a consultant.

## PACKAGE INCLUDES

- Quality Tiles & Carpet
- Blinds and Flyscreens to windows
- Insulation to walls and ceiling (excluding garage)
- 900mm Stainless Steel Oven, Cook top and Range hood. Stainless Steel Dishwasher
- 20mm stone bench top to kitchen with Soft close drawers and doors.
- Render to colour trims included
- Down lights to living Areas
- Automatic Garage Doors
- TV Antenna
- Driveway, Landscaping, Site Costs & Fencing





House Length	21.03m	Total Area m <sup>2</sup>	270.30
House Width	8.75m	Total Area Squares	29