

Land Registration 3rd  
Quarter 2022



Rozelle 25 | Oxford Facade

Facade images and landscaping may vary from this image

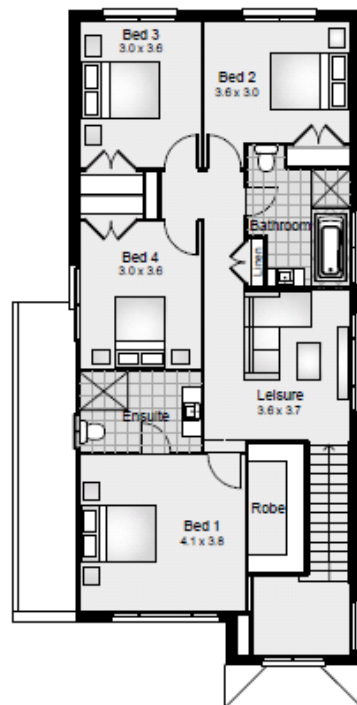
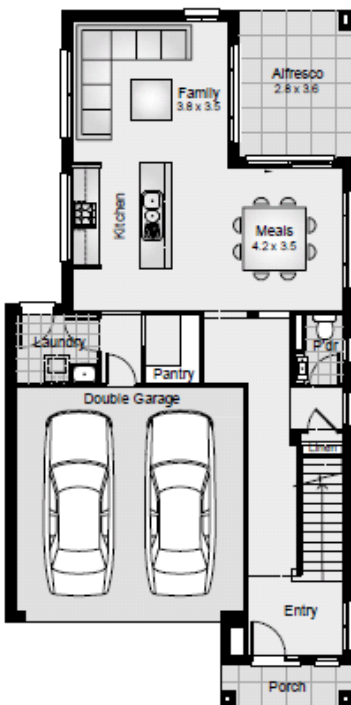
4 | 2.5 | 2

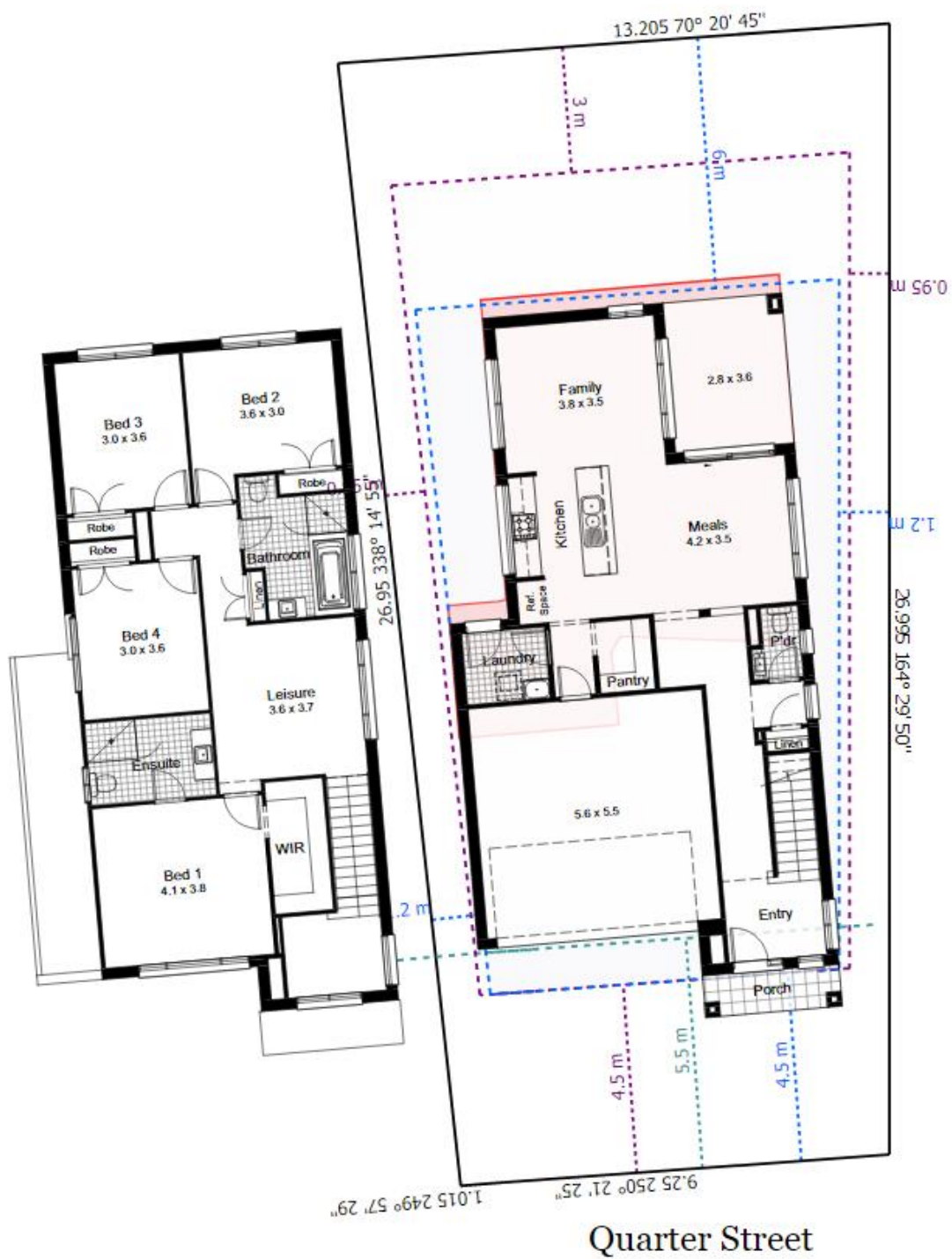
Lot 84 \$1,318,000

Includes Sapphire Inclusions and  
Feel Free Promotion

## PACKAGE INCLUDES

- Land Size - 315 SQM
- Driveways, Landscaping, Fencing
- Floor Coverings
- Fully Ducted Air
- 2750mm Ceiling Height to Ground Floor – subject to approval
- Smeg Appliances
- Roller blinds
- Colour Trims to Façade
- 40mm Stone Benchtops with waterfall edge to Kitchen
- Two 600 Wide Ovens
- Auto Garage Door
- Alarm System
- \$30,000 Discount Promotion Already Applied





House Length	17.07m	Total Area m <sup>2</sup>	234.20
House Width	8.55m	Total Area Squares	25